

00443

KAISER
RESOURCES
COAL DIVISION

COAL
00433

KAISER RESOURCES LTD.
P.O. BOX 270
SPARWOOD, BRITISH COLUMBIA
604-488-8121
V0B 2G0

1980 04 28

ALEC MATHESON
GEOLOGY DIVISION
COAL RESOURCES
PARLIAMENT BUILDINGS
VICTORIA, B.C.

Dear Mr. Matheson:

Re: Telecon with Nancy Bryant
on April 21, 1980

Please find attached a list of locations for nineteen rotary drill holes, two core holes and three adits. Attached also is a map of the Greenhills area. The locations and map are on the U.T.M. grid.

Please pardon the delay as we were in the process of moving to a new office.

Respectfully,
KAISER RESOURCES LTD.



E.G. Hetherington
Exploration Geologist

cc: J.B. Murphy
L.B. Samuelson

EGH/cl
Attachments

443

%CONV /EXT/DE/DRILL
ALIST

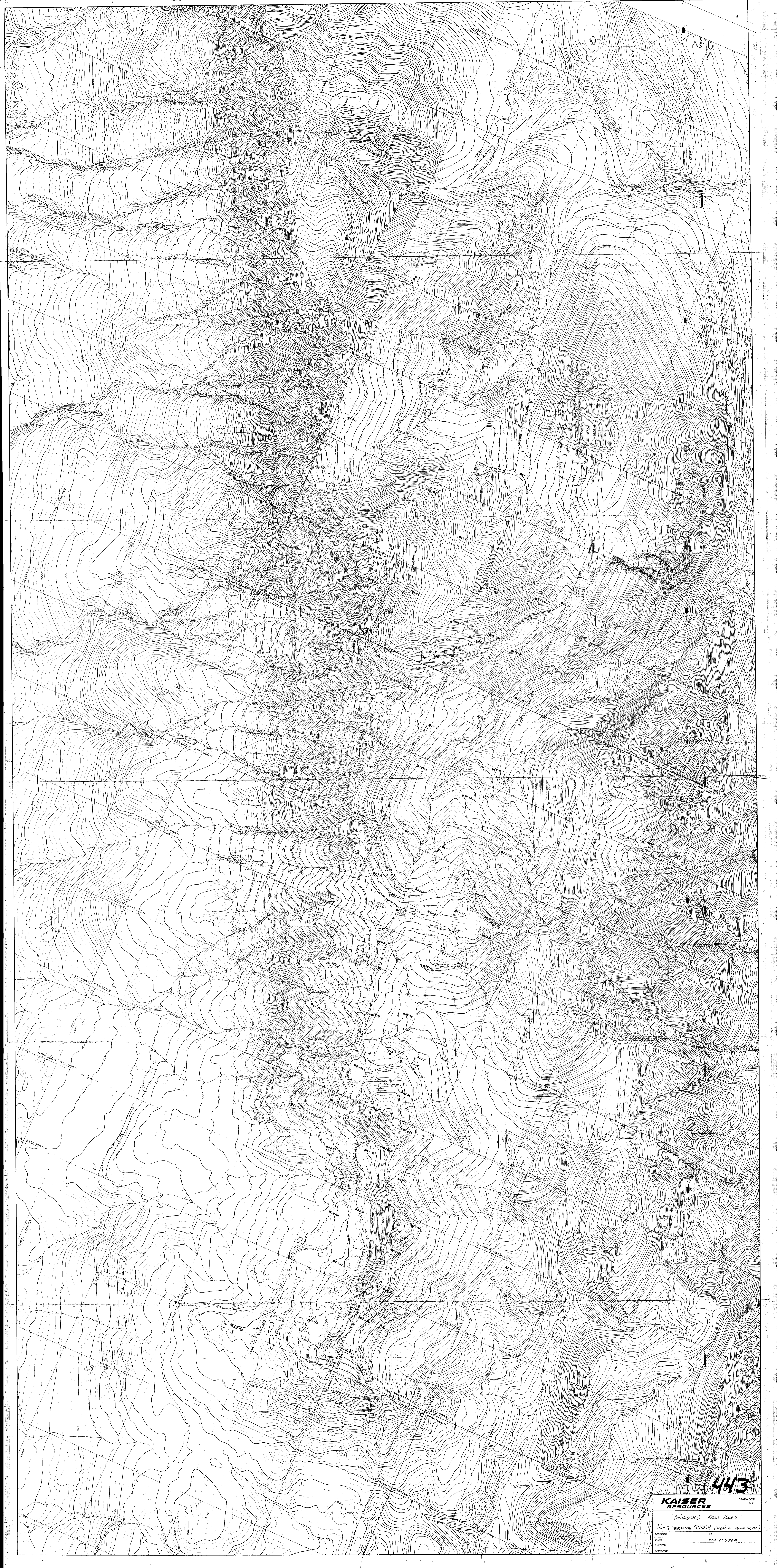
EV001	5556622.375	650422.375	1947.240
EV002	5556103.419	650469.879	2043.809
EV003	5556042.583	650928.744	2069.318
EV004	5554367.587	651636.580	2117.540
EV005	5552620.329	652204.059	2201.135
EV006	5553081.438	652004.781	2143.320
EV007	5553040.272	652307.208	2122.011
EV008	5554044.425	652222.047	2104.129
EV009	5552258.800	652322.179	2217.703
EV010	5555146.142	650070.731	2131.311
EV011	5558356.542	650477.515	1969.127
EV012	5555213.182	650077.716	2026.661
EV013	5550000.046	652361.967	1973.531
EV014	5554274.414	651714.094	2051.428
EV015	5553691.523	652038.288	2146.036
EV016	5554277.804	652317.137	2119.290
EV017	5554767.577	651767.183	2011.994
EV018	5554595.912	651307.010	2239.835
EV019	5554551.968	652085.239	1995.367
EV020	5555192.637	651184.325	1979.265
EV021	5554928.774	651525.360	2071.751
EV022	5556226.111	650102.690	2027.004
EV023	5555690.735	650766.105	2132.771
EV024	5556042.383	650928.744	2069.318
EV025	5556720.210	651283.249	1942.053
EV026	5551467.365	652832.016	2282.556
EV027	5555602.903	651296.326	1950.762
EV028	5550704.797	653048.027	2193.560
EV029	5552766.010	652074.599	2240.132
EV030	5552633.227	652640.924	2238.711
EV031	5552903.857	652252.177	2253.703
EV032	5553587.477	652750.443	2039.365
EV033	5552556.493	653093.174	2179.082
EV034	5550965.487	653073.991	2197.276
EV035	5551176.697	652918.778	2156.907
EV036	5550345.329	653035.752	2140.790
EV037	5551310.986	652760.270	2159.084
EV038	5551654.733	652736.687	2204.857
EV039	5552080.689	652543.466	2110.229
EV040	5552006.024	652560.229	2177.427
EV041	5551977.071	652370.507	2104.940
EV042	5552687.680	653098.070	2240.320
EV043	5552965.324	652562.651	2231.176
EV044	5552776.060	652340.059	2205.414
EV045	5553389.072	652277.637	2062.792
EV046	5553847.712	652270.271	2052.880
EV047	5553397.531	652476.706	1992.392
EV048	5552761.319	652058.632	2237.509
EV049	5551447.632	652365.693	2132.446
EV050	5553919.474	651603.267	1764.479
EV051	555244.171	651955.414	1849.310
EV057	5550001.240	651900.107	1885.910
EV058	5554046.000	651480.898	2210.551
EV059	5554607.000	652320.140	2076.767
EV060	5554313.000	652153.350	2108.020
EV061	5554650.125	652470.094	2122.560
EV062	5554331.750	651371.719	2196.031
EV063	5553042.310	651832.130	2237.660
EV064	5553476.563	651812.047	2230.676
EV065	5553442.938	652067.297	2091.737
EV066	5553048.313	651833.172	2221.897
EV067	5552753.000	652405.214	2224.042
EV068	5551689.125	652413.769	2105.010
EV069	5552686.625	652456.680	2202.641
EV070	5552477.500	652739.020	2203.836
EV072	5553177.108	652717.148	2088.317
EV074	5551830.000	652501.383	2154.508
EV075	5551822.375	652455.252	2151.177
EV076	5550142.250	653054.859	2130.001
EV071	5553063.063	652146.267	2111.986
EV073	5554024.250	652440.953	1987.298
EV077	5551188.250	652454.164	2026.666
EV078	5551496.563	652635.039	2239.802
EV079	5551818.713	652040.209	2044.417
EV080	5551007.180	652919.047	2168.522
EV081	5550921.125	652757.758	2070.689
EV082	5551259.500	652671.000	2122.390
EV083	5550219.500	652762.992	2044.793
EV084	5551597.500	652114.094	2029.563
EV085	5551332.625	652166.305	2023.643
EV086	5550846.250	652623.750	2012.697
EV087	5552013.375	652212.883	2147.358
Adit 21	5551848.711	652726.528	2137.203
Adit 21A	5551825.663	652744.157	2137.553
Adit 22	5555027.781	650697.108	2012.509

1978 Greenhills Rotary Drill Holes

1978 Greenhills Diamond Drill Holes

1978 Greenhills Rotary Drill Hole

1978 Greenhills Adits



443

KAISER RESOURCES SPARWOOD B.C.
SPARWOOD Base Maps
K-SPARWOOD 79(2)A (revised April 24, 1979)
DESIGNED: _____ DATE: _____
DRAWN: _____ SCALE: 1:5000
CHECKED: _____
APPROVED: _____