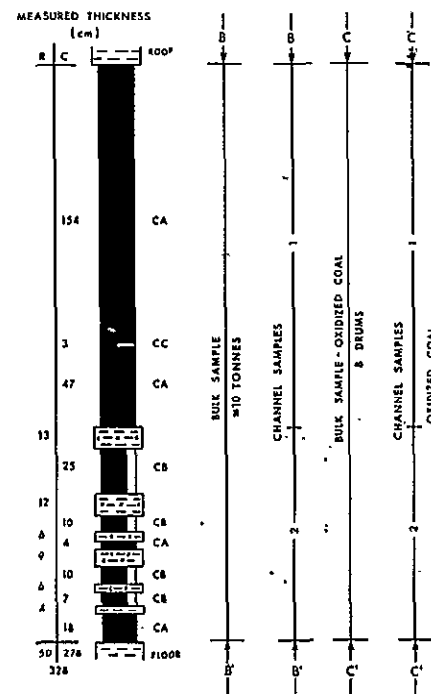
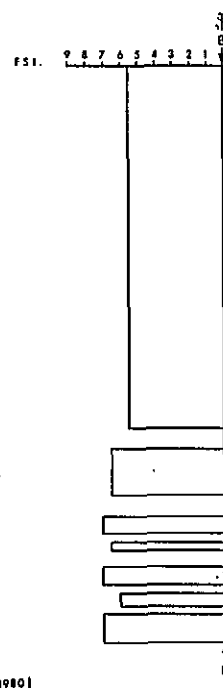
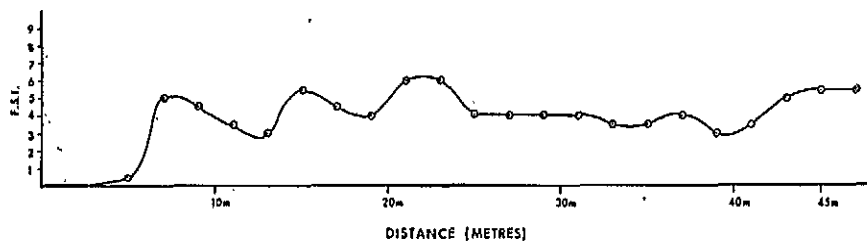
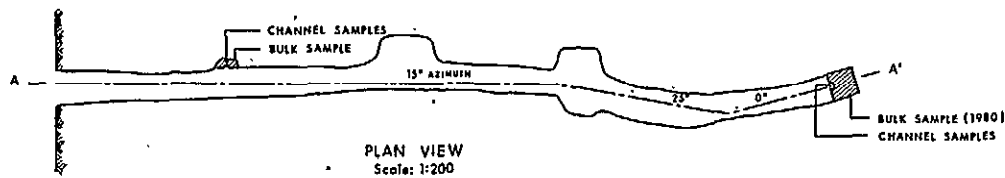


APPENDIX 2
ADIT DRAWINGS

SECTION A-A'
Scale: 1:200




SECTION B-B' & C-C'
VERTICAL SCALE 1:20
HORIZONTAL SCALE —

LEGEND

CA	COAL	0-10%	ash
CB	COAL	11-20%	ash
CC	COAL	21-30%	ash
CD	COAL	> 30%	ash

BASED ON VISUAL ESTIMATES

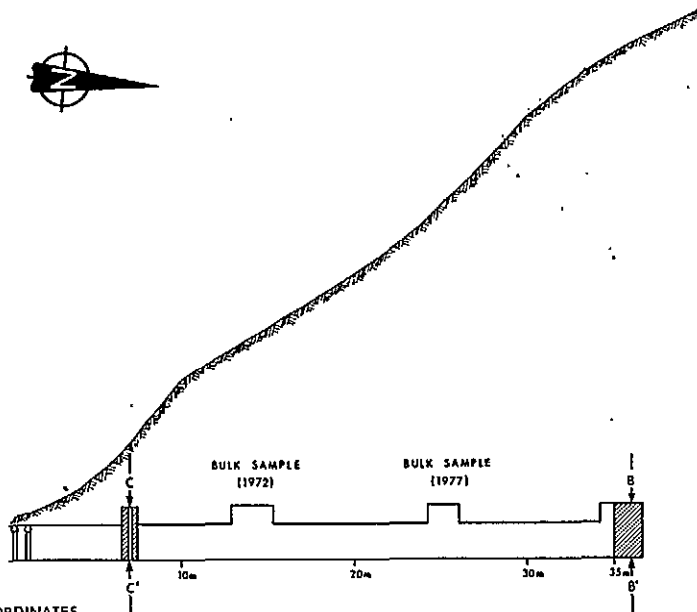
 CARBONACEOUS CLAYSTONE
 CLAYSTONE

QUINTETTE COAL LIMITED

DENISON MINES LIMITED

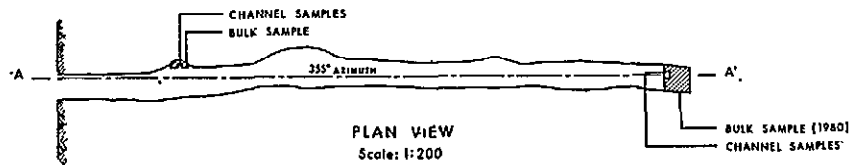
BABCOCK PIT-WINDY AREA
ADIT D-4-80

DRAWN BY: AL	DATE: OCT 1960	SCALE: AS SHOWN
PREP'D BY: DELAS	DATE: OCT. 1960	DRAWING NUMBER
APPRO'D BY: DELAS	DATE: OCT. 1960	QMIF-65-987-500

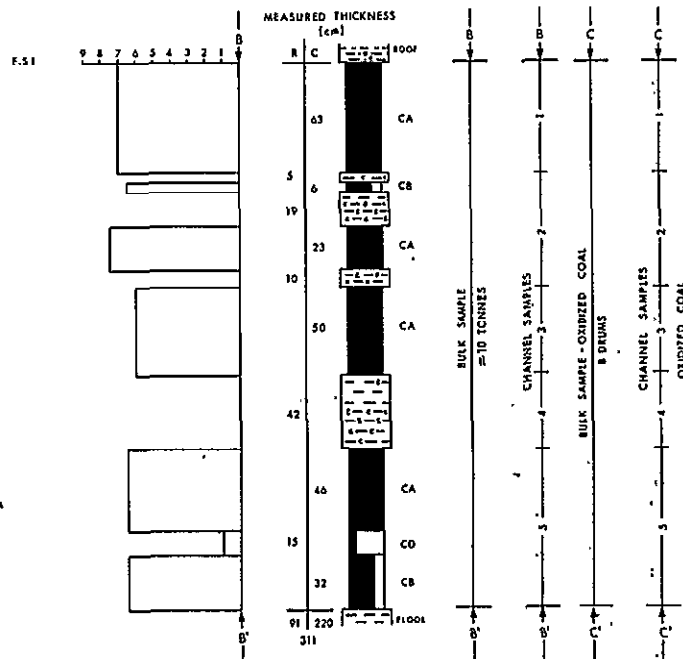


PORTAL COORDINATES
U.T.M. GEOGRAPHIC
6088761 N 54° 55' 54"
626560 E 121° 07' 29"
ELEVATION 1555m.

SECTION A-A
Scale: 1:200



PLAN VIEW
Scale: 1:200



SECTION B-B' & C-C'
VERTICAL SCALE 1:20
HORIZONTAL SCALE -

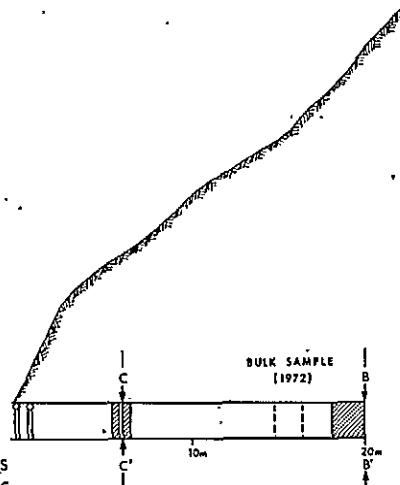
LEGEND

- CA COAL 0-10% ash
 - CB COAL 11-20% ash
 - CC COAL 21-30% ash
 - CD COAL > 31% ash
- BASED ON VISUAL ESTIMATES
- CARBONACEOUS CLAYSTONE
 - CLAYSTONE

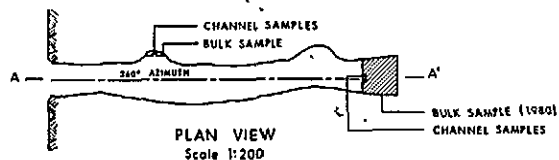
QUINETTE COAL LIMITED		
REPRESENTED BY		
DENISON MINES LIMITED		
BABCOCK PIT-WINDY AREA		
ADIT E-8-80		
DRAWN BY: A.L.	DATE: OCT. 1980	SHEET NO. 100
REVISED BY: J.L.	DATE: OCT. 1980	DRAWING NUMBER
APPROVED BY: J.L.	DATE: OCT. 1980	QNT-80-007-001



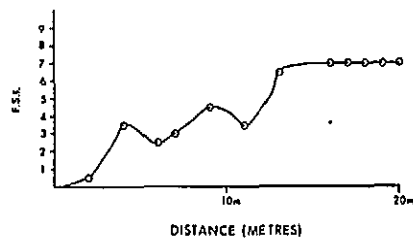
PORTAL COORDINATES
U.T.M. GEOGRAPHIC
6088787 N 54°55'55"
626436 E 121°01'30"
ELEVATION 1553m.



SECTION A-A'
Scale: 1:200

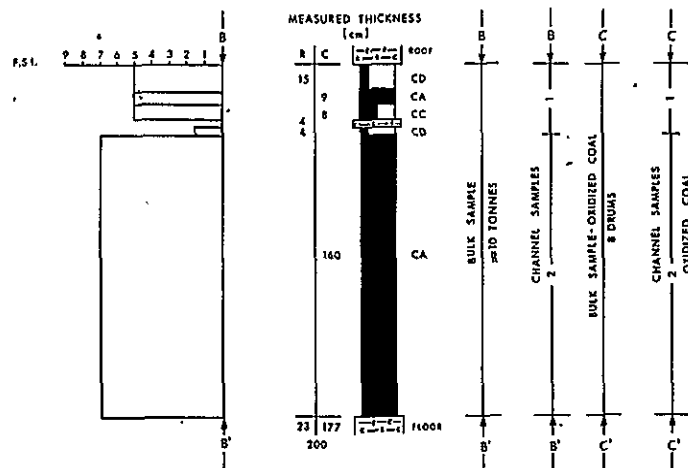


PLAN VIEW
Scale 1:200



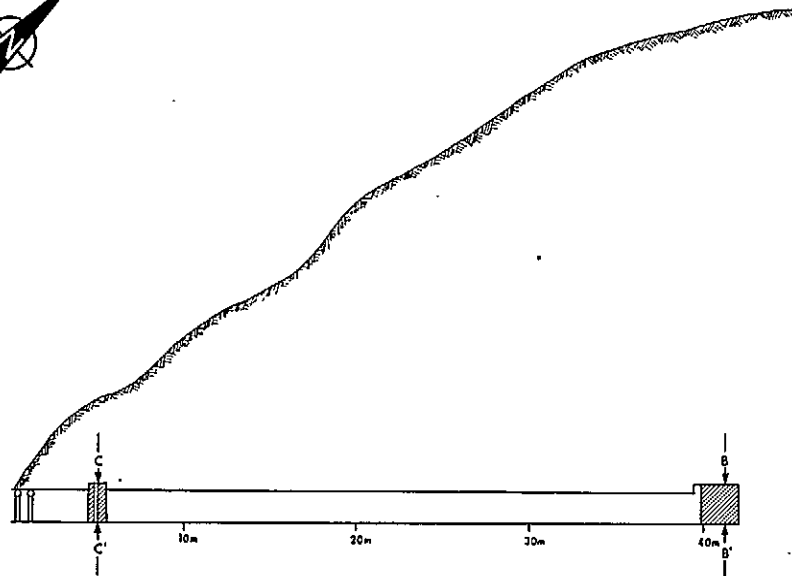
LEGEND

- CA COAL 0-10% ash
 - CB COAL 11-20% ash
 - CC COAL 21-30% ash
 - CD COAL > 31% ash
- BASED ON VISUAL ESTIMATES
- CARBONACEOUS CLAYSTONE
 - CLAYSTONE



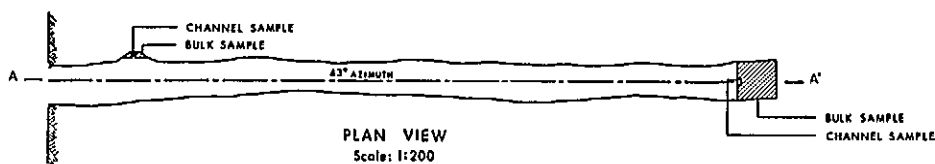
SECTION B-B' & C-C'
VERTICAL SCALE 1:20
HORIZONTAL SCALE —

QUINTETTE COAL LIMITED		
PREPARED BY DENISON MINES LIMITED		
BABCOCK PIT-WINDY AREA ADIT F-6-80		
DRAWN BY: A.C.	DATE: OCT. 1980	SHEET: AS SHOWN
REV'D BY: J. J. J.	DATE: OCT. 1980	DRAWING NUMBER:
APPRO'D BY: DEAS	DATE: OCT. 1980	QNT-90-907-801

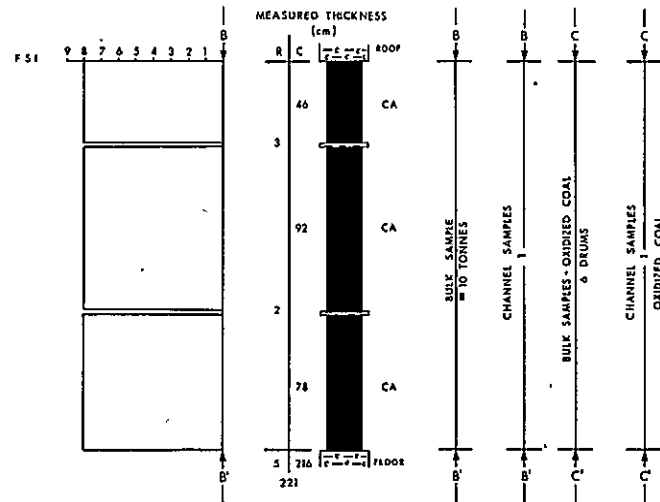
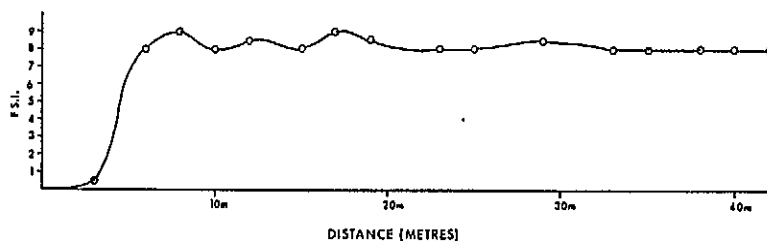


PORTAL COORDINATES
U.T.M. GEOGRAPHIC
4089025 N 34° 50' 02"
626318 E 121° 01' 42"
ELEVATION 1556m.

SECTION A-A'
Scale: 1:200



PLAN VIEW
Scale: 1:200

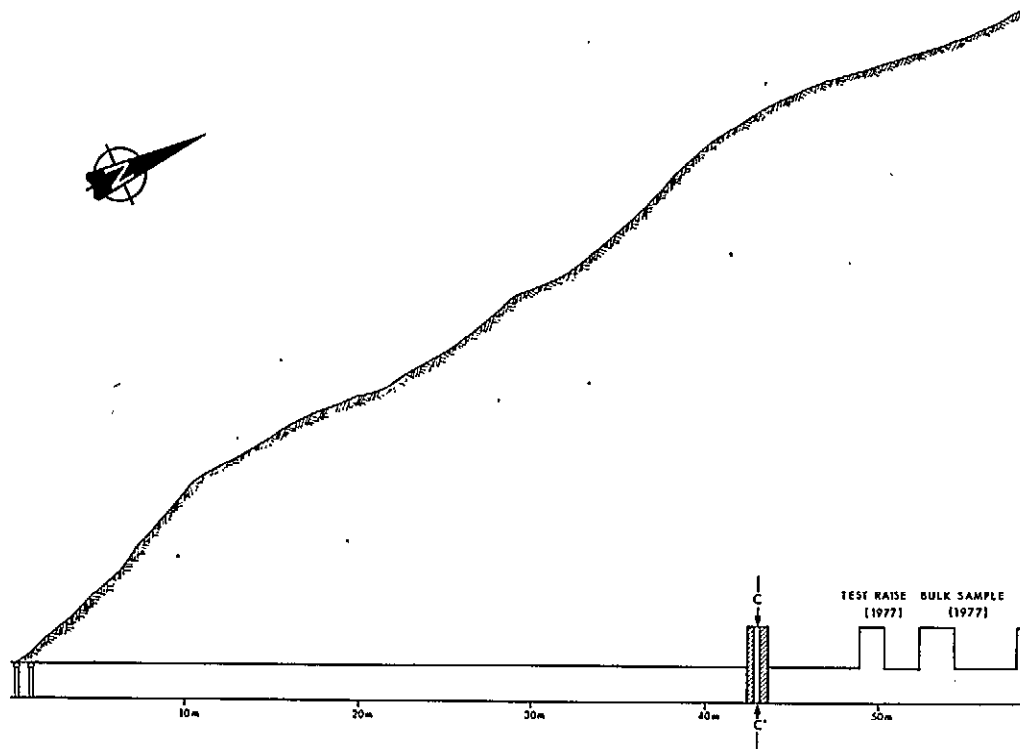


SECTION B-B' & C-C'
VERTICAL SCALE 1:20
HORIZONTAL SCALE —

LEGEND

- CA COAL 0-10% ash
 - CB COAL 11-20% ash
 - CC COAL 21-30% ash
 - CD COAL > 31% ash
- BASED ON VISUAL ESTIMATES
- CARBONACEOUS CLAYSTONE
 - CLAYSTONE

QUINTETTE COAL LIMITED		
PREPARED BY DENISON MINES LIMITED		
BABCOCK PIT-WINDY AREA ADIT G-18-80		
DRAWN BY: A.S.	DATE: OCT. 1980	SCHMAS SHOWN
PREP BY: J. J. J.	DATE: OCT. 1980	DRAWING NUMBER
APP'D BY: J. J. J.	DATE: OCT. 1980	QNTT-80-903-801

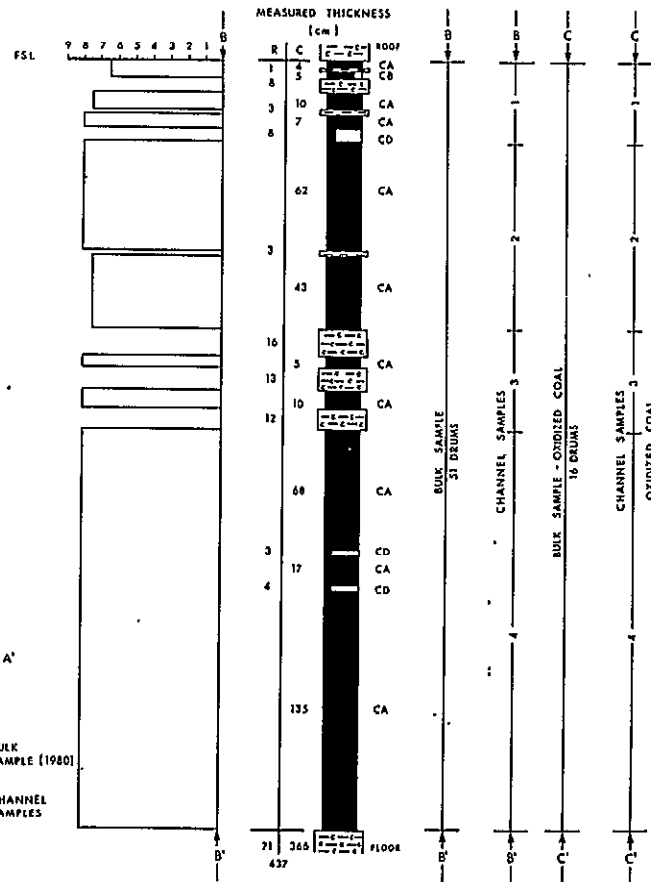
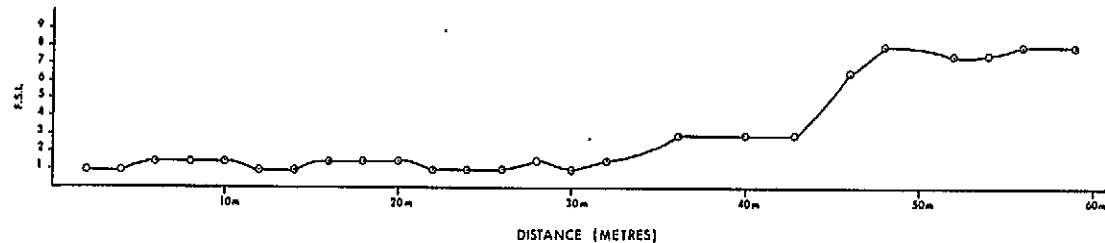


PORTAL COORDINATES
U.T.M. GEOGRAPHIC
6090721 N 34°56'55"
627607 E 121°01'30"
ELEVATION 1566m.

SECTION A-A'
Scale: 1:200



PLAN VIEW
Scale: 1:200



SECTION B-B' & C-C'
VERTICAL SCALE 1:20
HORIZONTAL SCALE —

LEGEND

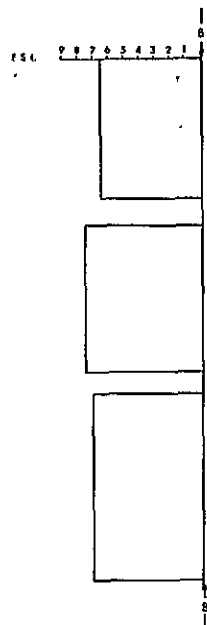
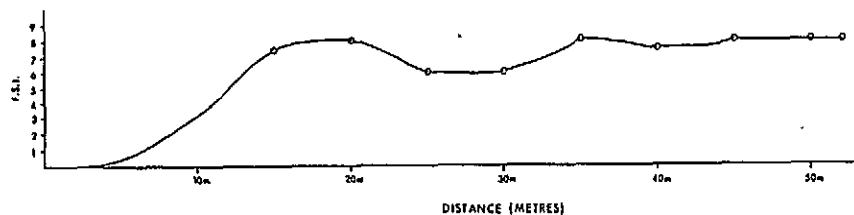
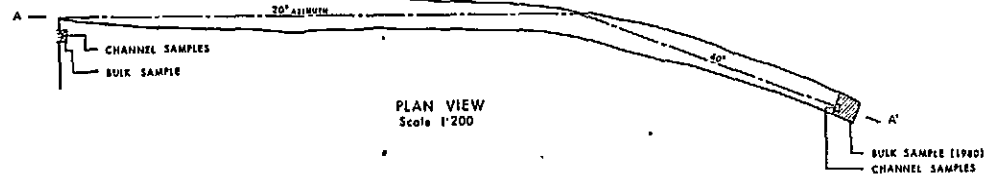
- CA COAL 0-10% ash
 - CB COAL 11-20% ash
 - CC COAL 21-30% ash
 - CD COAL > 31% ash
 - CARBONACEOUS CLAYSTONE
 - CLAYSTONE
- BASED ON VISUAL ESTIMATES

QUINTETTE COAL LIMITED		
PREPARED BY DENISON MINES LIMITED		
BABCOCK PIT-WINDY AREA ADIT J-15-80		
DRAWN BY: A.S.	DATE: OCT 1980	SCALE: AS SHOWN
REVD BY: J. G. B. B.	DATE: OCT 1980	DRAWING NUMBER:
APPROVED BY: D.E.S.	DATE: OCT 1980	QNTT-80-007-801



PORTAL COORDINATES
U.T.M. GEOGRAPHIC
6098828 N 55°01'29"
415481 E 121°11'40"
ELEVATION 1717m.

SECTION A-A'
Scale: 1:200



LEGEND

- CA COAL 0-10% ash
- CB COAL 11-30% ash
- CC COAL 31-50% ash
- CD COAL > 51% ash

BASED ON VISUAL ESTIMATES

CARBONACEOUS CLAYSTONE

CLAYSTONE

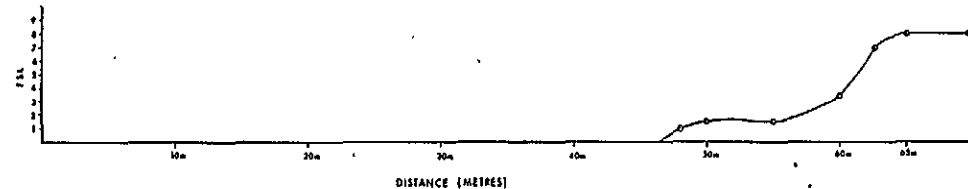
QUINTETTE COAL LIMITED		
PREPARED BY DENISON MINES LIMITED		
SHERIFF PIT ADIT E-80		
DRAWN BY J. J. JONES	DATE OCT 1982	SCALE AS SHOWN
CHECKED BY J. J. JONES	DATE OCT 1982	DRAWING NUMBER QNTT-88-007-001



PORTAL COORDINATES
 U.T.M. GEOGRAPHIC
 6088771 N 55°01'23"
 612563 E 121°19'43"
 ELEVATION 1 840m

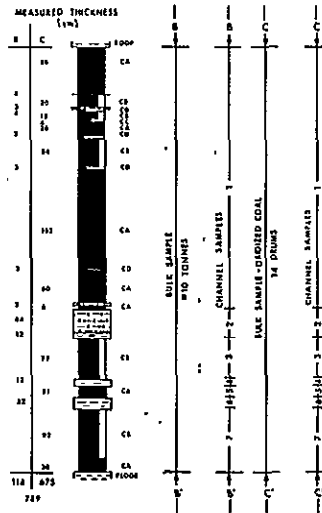
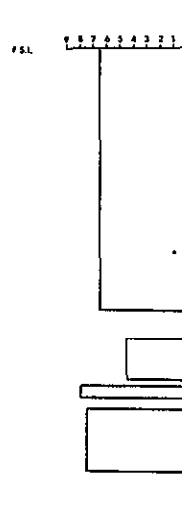
SECTION A-A'
 Scale: 1:200

PLAN VIEW
 Scale: 1:200



LEGEND

- CA COAL 0-10% ash
 - CB COAL 11-20% ash
 - CC COAL 21-30% ash
 - CD COAL 31% ash
 - CC CARBONACEOUS CLAYSTONE
 - CL CLAYSTONE
- BASED ON VISUAL ESTIMATE



SECTION B-B' & C-C'
 VERTICAL SCALE 1:50
 HORIZONTAL SCALE —

QUINTETTE COAL LIMITED			
PRODUCED BY DENISON MINES LIMITED			
SHERIFF PIT			
ADIT J-3-80			
Drawn by: J. J. J.	Date: OCT 1980	Scale: AS SHOWN	
Checked by: J. J. J.	Date: OCT 1980	Revised by: J. J. J.	
Approved by: J. J. J.	Date: OCT 1980	Printed by: J. J. J.	

APPENDIX 3
GEOPHYSICAL LOGS

FILE NO. COMPANY DEERSON MINES LTD.

WELL 276 8221

LOCATION

FIELD QUINTEETE

PROVINCE BRITISH COLUMBIA

PERMITTING AUTHORITY K. 8 DEN. DIR.

LOG MEASURED FROM TOP OF CASING 0 ft Above Perm Datum

Well Depth Measured from 0 ft

Run No. 085 T00

Date 24 JULY 1980 26 JULY 1980

First Reading 94 M 123 M

Footage Logged 0 94

Depth Reached 94.5 123.5

Casing Rate 1.6

Fluid Type WATER

Fluid Level 0

Min. Diam. 11.4 CM

Rm @ 5 F 52.5 @ 49°

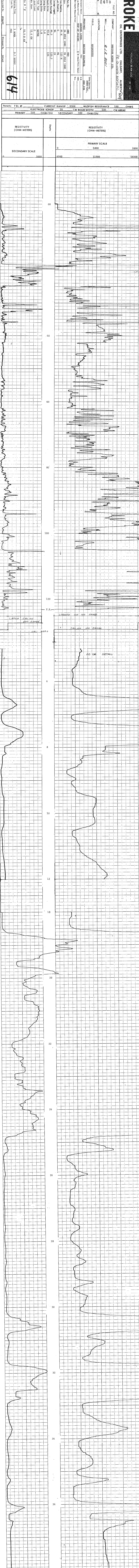
Operating Time 1 HOUR 0.3 HOURS

Truck No. F02

Recorded By RUDANZ

Witnessed By DJLAS

614



ROKE

OIL ENTERPRISES LTD. CALGARY, ALBERTA

GAMMA RAY NEUTRON LOG

PR-QUINTEITE 80(3)A(*)1 8001

FILE NO.	COMPANY	DENTSON MINES LTD.
LSD	WELL	Q/R 8001
SEC	LOCATION	
TWP	FIELD	QUINTEITE
RGE		
W		
PROVINCE	BRITISH COLUMBIA	DENS-CAL, FBI, DJR
Permanent Datum	GROUND LEVEL	Elev.
Log Measured from	TOP OF CASING	Above Perm. Datum
Well Depths Measured from		K.B. _____ CSG _____ G.L. _____
Run No.	ONE	TWO
Date	24 JULY 1980	24 JULY 1980
First Reading	93 M	123 M
Last Reading	0	93
Footage Logged	93	30
Depth Reached	93.5	123.5
Depth Driller	97.8	124
Casing Rock	1.6	
Casing Driller	1.8	
Fluid Type	WATER	
Liquid Level	6	
Mtr. Diam.	11.4 CM	
Rm @		
Operating Time	0.7 HOUR	0.3 HOUR
Truck No.	FT2	

614

EQUIPMENT DATA			
GAMMA RAY		NEUTRON	
RUN NO.	ONE	RUN NO.	ONE
TOOL MODEL NO.	125	LOG TYPE	NEUTRON/NEUTRON
DIAMETER	3.2 CM	TOOL MODEL NO.	125
DETECTOR MODEL NO.		DIAMETER	3.2 CM
TYPE	SCINTILLATION	DETECTOR MODEL NO.	
LENGTH	10 CM	TYPE	PROPORTIONAL
DISTANCE TO N. SOURCE	2 M	LENGTH	15 CM
		SOURCE MODEL NO.	MRC-N-SS-W
GENERAL		SERIAL NO.	187
HOIST TRUCK NO.		SPACING	43 CM
INSTRUMENT TRUCK NO.	FU2	TYPE	AmBe
TOOL SERIAL NO.	125A007	STRENGTH	3 CURIES

LOGGING DATA			
GENERAL		GAMMA RAY	
RUN NO.	ONE	T.C.	SENS
DEPTHS	FROM TO	SEC.	SETTINGS
ONE	0 93	4	3
TWO	93 123	4	3

LOGGING DATA			
GENERAL		GAMMA RAY	
RUN NO.	ONE	T.C.	SENS
DEPTHS	FROM TO	SEC.	SETTINGS
ONE	0 93	4	3
TWO	93 123	4	3

LOGGING DATA			
GENERAL		GAMMA RAY	
RUN NO.	ONE	T.C.	SENS
DEPTHS	FROM TO	SEC.	SETTINGS
ONE	0 93	4	3
TWO	93 123	4	3

LOGGING DATA			
GENERAL		GAMMA RAY	
RUN NO.	ONE	T.C.	SENS
DEPTHS	FROM TO	SEC.	SETTINGS
ONE	0 93	4	3
TWO	93 123	4	3

LOGGING DATA			
GENERAL		GAMMA RAY	
RUN NO.	ONE	T.C.	SENS
DEPTHS	FROM TO	SEC.	SETTINGS
ONE	0 93	4	3
TWO	93 123	4	3

LOGGING DATA			
GENERAL		GAMMA RAY	
RUN NO.	ONE	T.C.	SENS
DEPTHS	FROM TO	SEC.	SETTINGS
ONE	0 93	4	3
TWO	93 123	4	3

LOGGING DATA			
GENERAL		GAMMA RAY	
RUN NO.	ONE	T.C.	SENS
DEPTHS	FROM TO	SEC.	SETTINGS
ONE	0 93	4	3
TWO	93 123	4	3

LOGGING DATA			
GENERAL		GAMMA RAY	
RUN NO.	ONE	T.C.	SENS
DEPTHS	FROM TO	SEC.	SETTINGS
ONE	0 93	4	3
TWO	93 123	4	3

LOGGING DATA			
GENERAL		GAMMA RAY	
RUN NO.	ONE	T.C.	SENS
DEPTHS	FROM TO	SEC.	SETTINGS
ONE	0 93	4	3
TWO	93 123	4	3

LOGGING DATA			
GENERAL		GAMMA RAY	
RUN NO.	ONE	T.C.	SENS
DEPTHS	FROM TO	SEC.	SETTINGS
ONE	0 93	4	3
TWO	93 123	4	3

LOGGING DATA			
GENERAL		GAMMA RAY	
RUN NO.	ONE	T.C.	SENS
DEPTHS	FROM TO	SEC.	SETTINGS
ONE	0 93	4	3
TWO	93 123	4	3

LOGGING DATA			
GENERAL		GAMMA RAY	
RUN NO.	ONE	T.C.	SENS
DEPTHS	FROM TO	SEC.	SETTINGS
ONE	0 93	4	3
TWO	93 123	4	3

LOGGING DATA			
GENERAL		GAMMA RAY	
RUN NO.	ONE	T.C.	SENS
DEPTHS	FROM TO	SEC.	SETTINGS
ONE	0 93	4	3
TWO	93 123	4	3

LOGGING DATA			
GENERAL		GAMMA RAY	
RUN NO.	ONE	T.C.	SENS
DEPTHS	FROM TO	SEC.	SETTINGS
ONE	0 93	4	3
TWO	93 123	4	3

LOGGING DATA			
GENERAL		GAMMA RAY	
RUN NO.	ONE	T.C.	SENS
DEPTHS	FROM TO	SEC.	SETTINGS
ONE	0 93	4	3
TWO	93 123	4	3

LOGGING DATA			
GENERAL		GAMMA RAY	
RUN NO.	ONE	T.C.	SENS
DEPTHS	FROM TO	SEC.	SETTINGS
ONE	0 93	4	3
TWO	93 123	4	3

LOGGING DATA			
GENERAL		GAMMA RAY	
RUN NO.	ONE	T.C.	SENS
DEPTHS	FROM TO	SEC.	SETTINGS
ONE	0 93	4	3
TWO	93 123	4	3

LOGGING DATA			
GENERAL		GAMMA RAY	
RUN NO.	ONE	T.C.	SENS
DEPTHS	FROM TO	SEC.	SETTINGS
ONE	0 93	4	3
TWO	93 123	4	3

LOGGING DATA			
GENERAL		GAMMA RAY	
RUN NO.	ONE	T.C.	SENS
DEPTHS	FROM TO	SEC.	SETTINGS
ONE	0 93	4	3
TWO	93 123	4	3

LOGGING DATA			
GENERAL		GAMMA RAY	
RUN NO.	ONE	T.C.	SENS
DEPTHS	FROM TO	SEC.	SETTINGS
ONE	0 93	4	3
TWO	93 123	4	3

LOGGING DATA			
GENERAL		GAMMA RAY	
RUN NO.	ONE	T.C.	SENS
DEPTHS	FROM TO	SEC.	SETTINGS
ONE	0 93	4	3
TWO	93 123	4	3

LOGGING DATA			
GENERAL		GAMMA RAY	
RUN NO.	ONE	T.C.	SENS
DEPTHS	FROM TO	SEC.	SETTINGS
ONE	0 93	4	3
TWO	93 123	4	3

LOGGING DATA			
GENERAL		GAMMA RAY	
RUN NO.	ONE	T.C.	SENS
DEPTHS	FROM TO	SEC.	SETTINGS
ONE	0 93	4	3
TWO	93 123	4	3

LOGGING DATA			
GENERAL		GAMMA RAY	
RUN NO.	ONE	T.C.	SENS
DEPTHS	FROM TO	SEC.	SETTINGS
ONE	0 93	4	3
TWO	93 123	4	3

LOGGING DATA			
GENERAL		GAMMA RAY	
RUN NO.	ONE	T.C.	SENS
DEPTHS	FROM TO	SEC.	SETTINGS
ONE	0 93	4	3
TWO	93 123	4	3

LOGGING DATA			
GENERAL		GAMMA RAY	
RUN NO.	ONE	T.C.	SENS
DEPTHS	FROM TO	SEC.	SETTINGS
ONE	0 93	4	3
TWO	93 123	4	3

LOGGING DATA			
GENERAL		GAMMA RAY	
RUN NO.	ONE	T.C.	SENS
DEPTHS	FROM TO	SEC.	SETTINGS
ONE	0 93	4	3
TWO	93 123	4	3

LOGGING DATA			
GENERAL		GAMMA RAY	
RUN NO.	ONE	T.C.	SENS
DEPTHS	FROM TO	SEC.	SETTINGS
ONE	0 93	4	3
TWO	93 123	4	3

LOGGING DATA			
GENERAL		GAMMA RAY	
RUN NO.	ONE	T.C.	SENS
DEPTHS	FROM TO	SEC.	SETTINGS
ONE	0 93	4	3
TWO	93 123	4	3

LOGGING DATA			
GENERAL		GAMMA RAY	
RUN NO.	ONE	T.C.	SENS
DEPTHS	FROM TO	SEC.	SETTINGS
ONE	0 93	4	3
TWO	93 123	4	3

LOGGING DATA			
GENERAL		GAMMA RAY	
RUN NO.	ONE	T.C.	SENS
DEPTHS	FROM TO	SEC.	SETTINGS
ONE	0 93	4	3
TWO	93 123	4	3

LOGGING DATA			
GENERAL		GAMMA RAY	
RUN NO.	ONE	T.C.	SENS
DEPTHS	FROM TO	SEC.	SETTINGS
ONE	0 93	4	3
TWO	93 123	4	3

LOGGING DATA			
GENERAL		GAMMA RAY	
RUN NO.	ONE	T.C.	SENS
DEPTHS	FROM TO	SEC.	SETTINGS
ONE	0 93	4	3
TWO	93 123	4	3

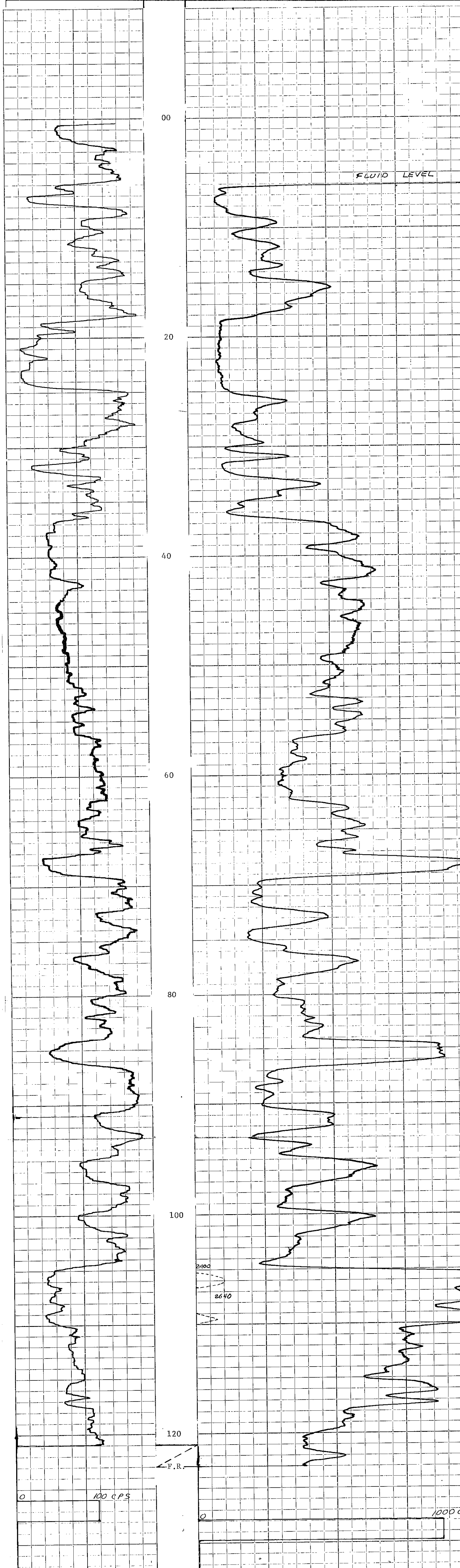
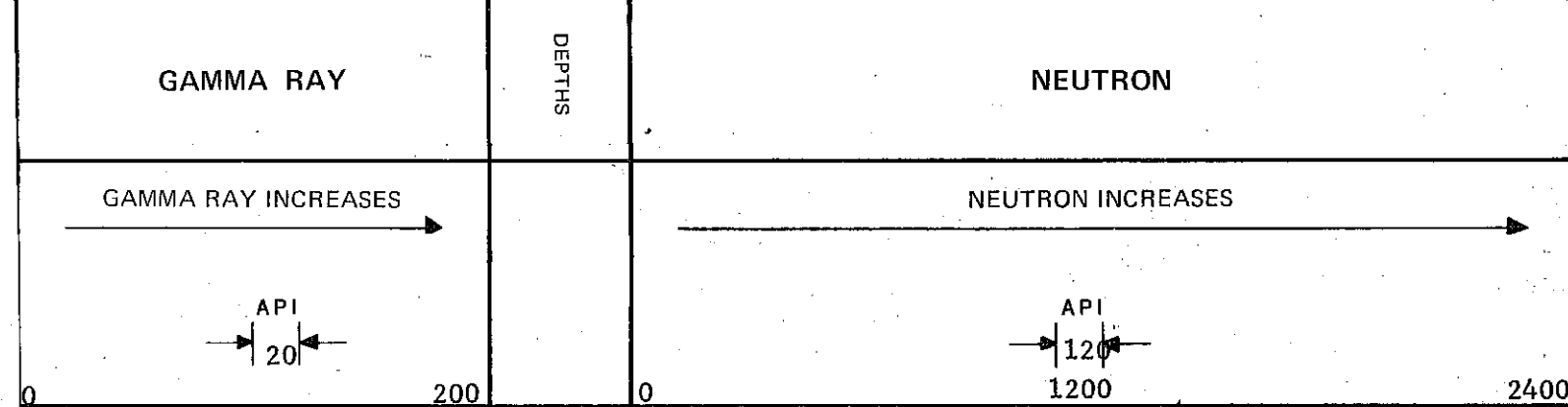
LOGGING DATA			
GENERAL		GAMMA RAY	
RUN NO.	ONE	T.C.	SENS
DEPTHS	FROM TO	SEC.	SETTINGS
ONE	0 93	4	3
TWO	93 123	4	3

LOGGING DATA			
GENERAL		GAMMA RAY	
RUN NO.	ONE	T.C.	SENS
DEPTHS	FROM TO	SEC.	SETTINGS
ONE	0 93	4	3
TWO	93 123	4	3

LOGGING DATA			
GENERAL		GAMMA RAY	
RUN NO.	ONE	T.C.	SENS
DEPTHS	FROM TO	SEC.	SETTINGS
ONE	0 93	4	3
TWO	93 123	4	3

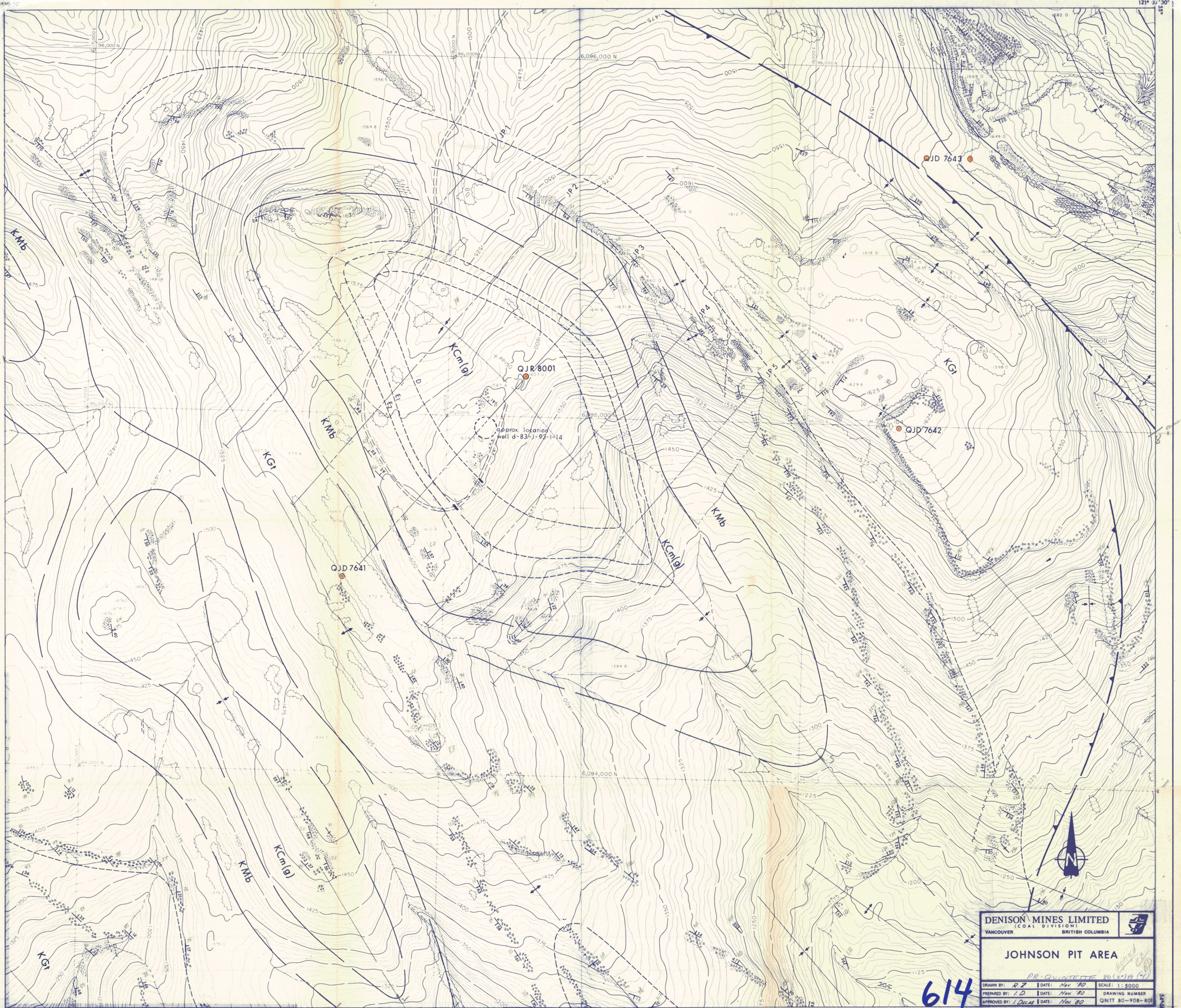
LOGGING DATA			
GENERAL		GAMMA RAY	
RUN NO.	ONE	T.C.	SENS
DEPTHS	FROM TO	SEC.	SETTINGS
ONE	0 93	4	3
TWO	93 123	4	3

LOGGING DATA			
GENERAL		GAMMA RAY	
RUN NO.	ONE	T.C.	SENS
DEPTHS	FROM TO	SEC.	SETTINGS
ONE	0 93	4	3
TWO	93 123	4	3



APPENDIX 4

GEOLOGY MAP AND CROSS SECTIONS OF JOHNSON AREA



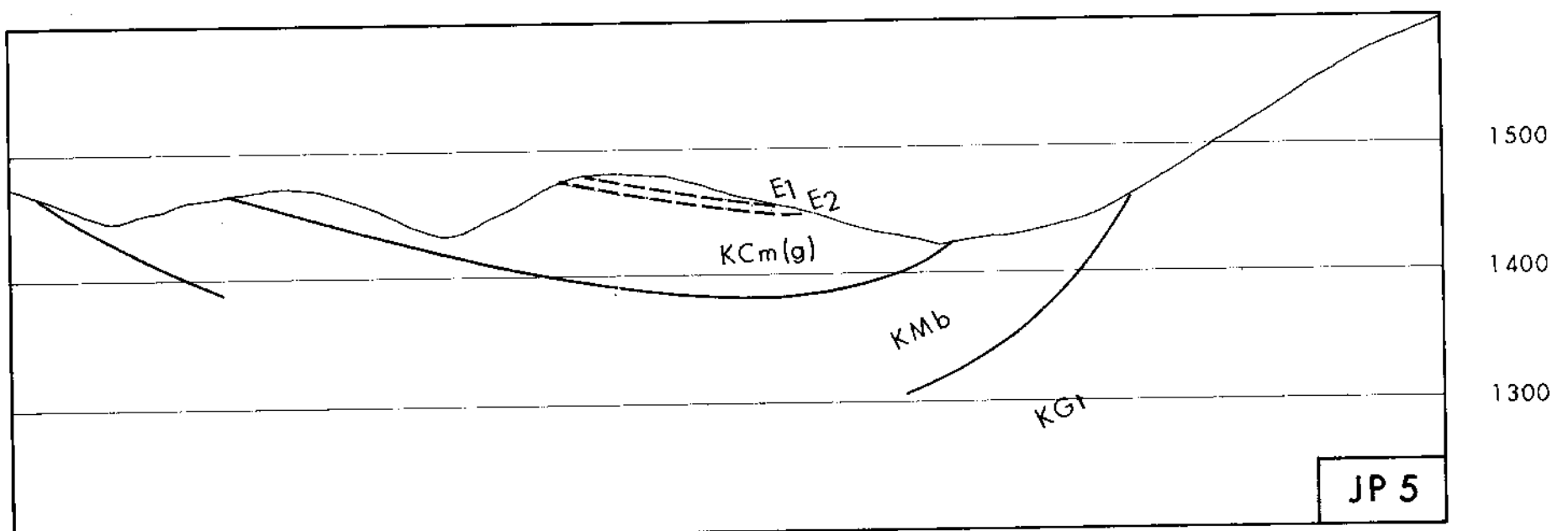
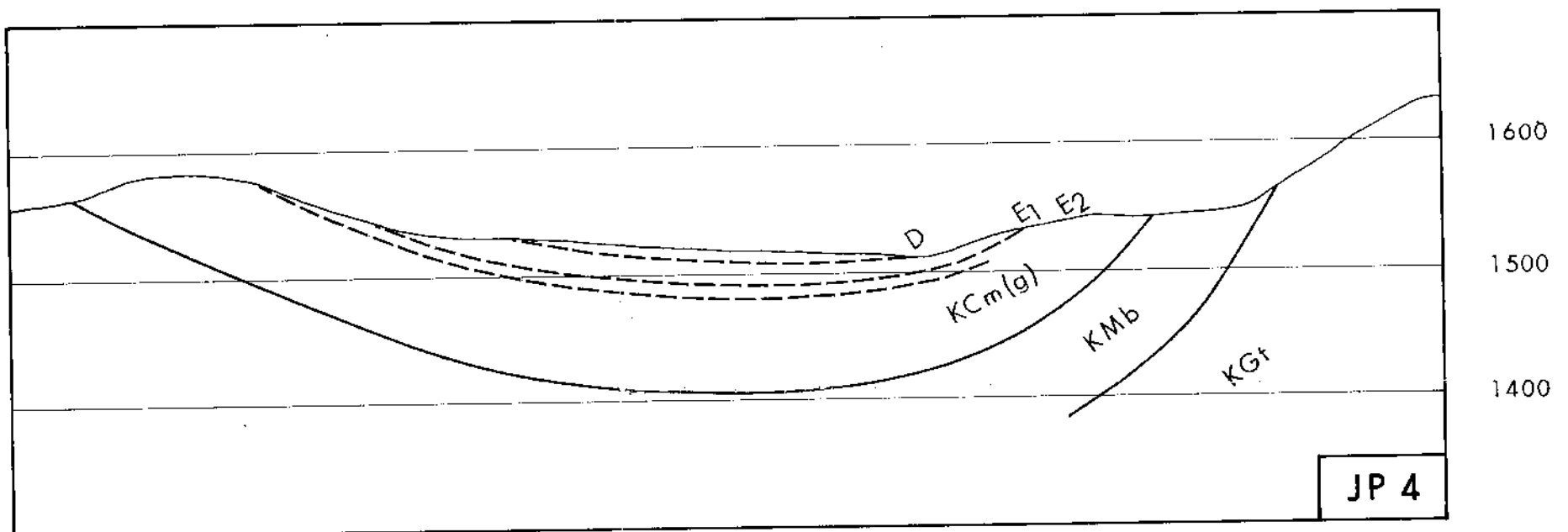
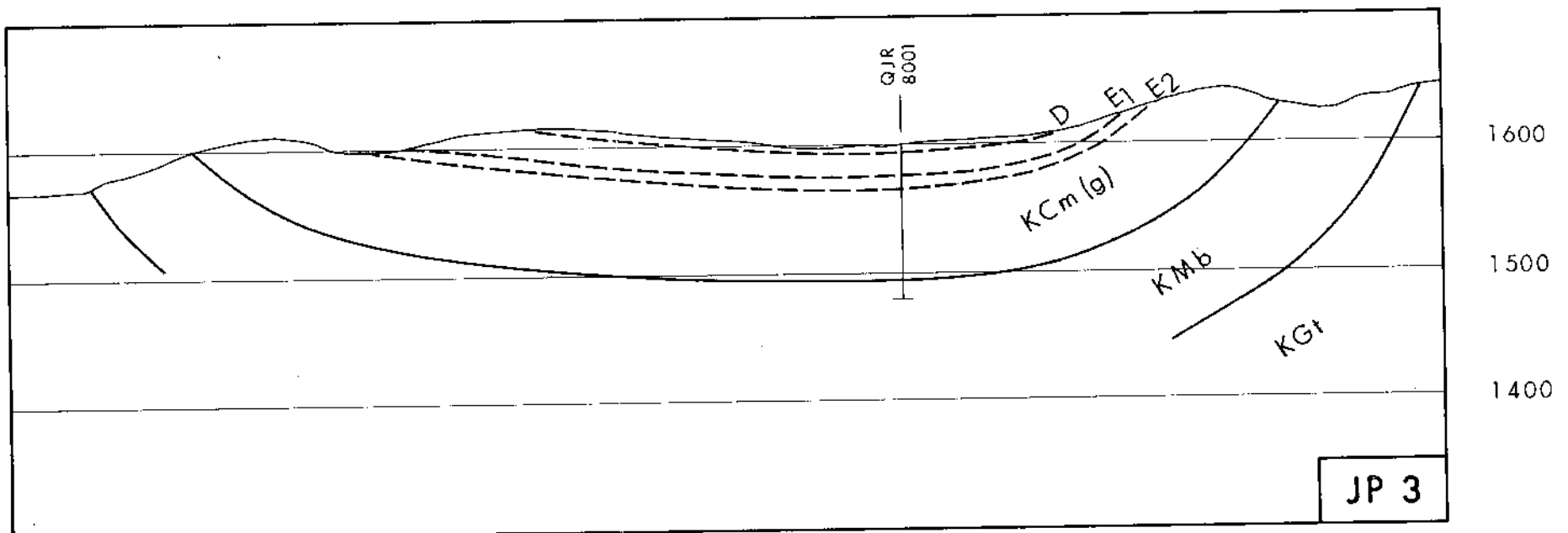
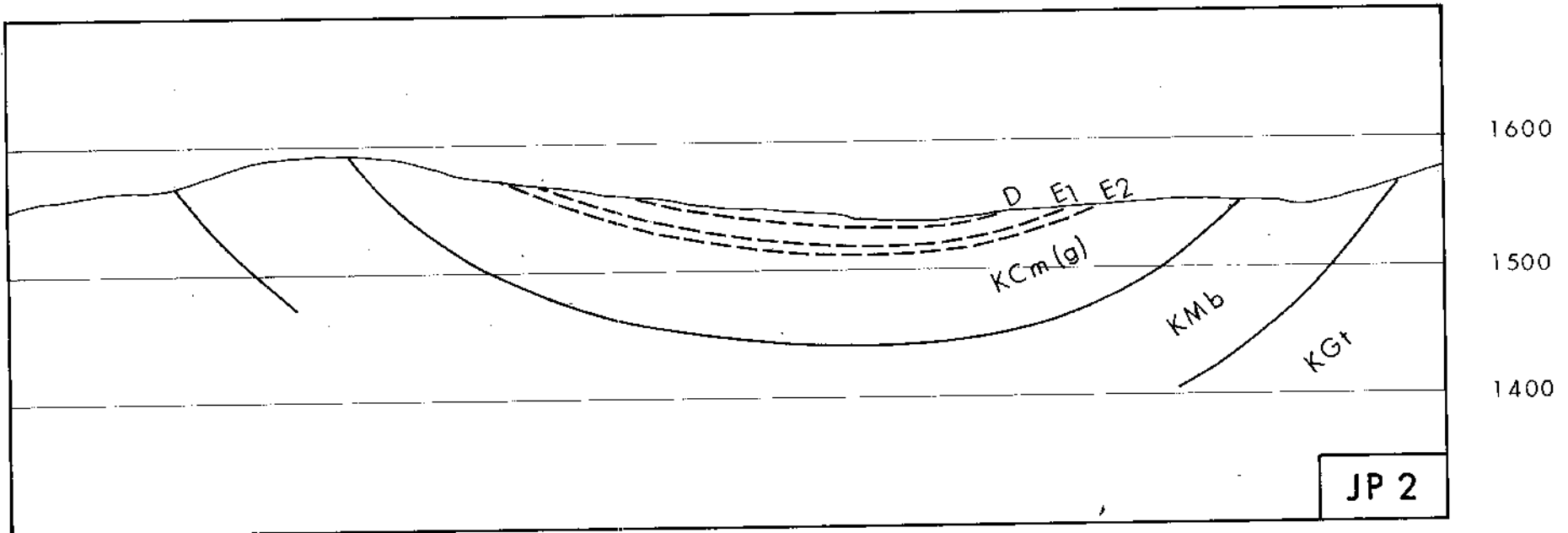
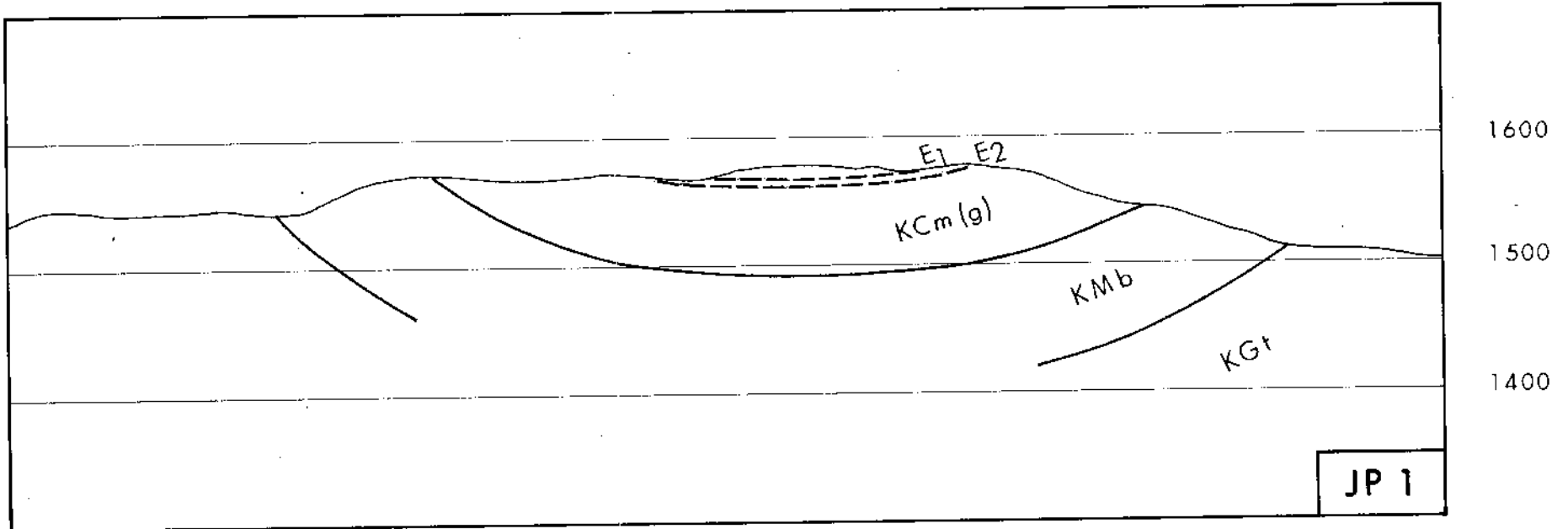
DENISON MINES LIMITED
(COAL DIVISION)
VANCOUVER BRITISH COLUMBIA

JOHNSON PIT AREA

PR-QUINTELL 80(2)A (4)
DRAWN BY: RZ DATE: Nov 80 SCALE: 1:5000
PREPARED BY: I.D. DATE: Nov 80 DRAWING NUMBER
APPROVED BY: I. DELAS DATE: Nov 80 QNTT 80-908-RO1

614

Comp # 103



KCm(g) COMMOTION FORMATION (GATES MEMBER)

KMb MOOSEBAR FORMATION

KGf GETHING FORMATION

---D--- COAL SEAM BASE

NOTE: ELEVATION MEASUREMENTS IN METRES ABOVE SEA LEVEL

100 0 100 200 300 400 METRES

PR. QUINTETTE 80 (Z) A (7A)

DENISON MINES LIMITED
(COAL DIVISION)
VANCOUVER BRITISH COLUMBIA




JOHNSON PIT AREA
1980 CROSS SECTIONS

DRAWN BY: R.Z. DATE: Nov. '80 SCALE: 1:5000

PREPARED BY: I.D. DATE: Nov. '80 DRAWING NUMBER

APPROVED BY: I. Dumas DATE: Nov. '80 QNTT 80-910-R01

614

A handwritten signature, possibly reading "J. J. Smith", is enclosed within a hand-drawn oval border made of small dots. The signature is written in a cursive style.

APPENDIX 5
LETTER FROM RECLAMATION INSPECTOR



Province of
British Columbia

Ministry of
Energy, Mines and
Petroleum Resources

Box 7438
Fort St. John
V1J 4M9

CY-5,3.1.1
SEP 24 1980

RS

Our File: C-56

September 19, 1980

Denison Mines Limited,
Coal Division,
P.O. Box 11575,
650 W. Georgia Street,
Vancouver, B.C.
V6B 4N7

Attention: I. Delas, Project Geologist.

Dear Sir:

Re: Inspection of Reclamation
Quintette Coal Project,
1980 Adit Program.

This will advise that on September 16, 1980 I undertook a final inspection of reclamation in the Sheriff Pit area of the Quintette property. Erosion control and reclamation on the two adit sites were found to be satisfactory, although I felt that additional erosion bars would have been desirable on roads leading to the adits.

Some germination of the seed has occurred, which raises the possibility of winter kill. Revegetation success will therefore be evaluated next year.

You may consider reclamation of the 1980 adit program to be current pending a follow-up inspection next summer.

Yours truly,

E.J. Hall,
Reclamation Inspector/Technician.

EJH:lf

cc: J.D. McDonald
T. Vaughan-Thomas

QUINTETTE COAL LIMITED

1508 - 102nd AVENUE
DAWSON CREEK, B.C.
V1G 2E2
TELEPHONE (604) 782-1371
TELEX 036-77140

GEOPHYSICAL LOGS

SUMMARY

1981 DRILLING PROGRAM

SEE COALFILE REPORT 615
for copies of logs.

614

QMD 8101	Coal quality log Neutron - Neutron Gamma log Coal lithology log Sonic Seam thickness log
QMD 8102	Sonic Coal quality log Neutron - Neutron Gamma log Seam thickness log Coal lithology log 2
QMD 8103	Neutron - Neutron Coal quality log Seam thickness log Coal lithology log 2 Neutron - Neutron Sonic
QMD 8104	Coal lithology log Neutron - Neutron Coal quality log Seam thickness log
QMD 8105	Neutron - Neutron Coal quality log Coal lithology log Seam thickness log
QMD 8106	Seam thickness log Neutron - Neutron and Gamma Ray 2 Coal lithology log 2 Seam thickness log Coal quality log
QMD 8107	Coal lithology log Neutron - Neutron and Gamma Ray log Coal quality log Seam thickness log

(See report 615 for copies of logs)

QBD 8101	Seam thickness log Coal quality log Coal lithology log Neutron - Neutron log
QBD 8102	Coal quality log Coal lithology log Neutron - Neutron Seam thickness log
QBD 8103	Coal lithology log Seam thickness log Coal quality log Neutron - Neutron
QBD 8104	Seam thickness log Neutron - Neutron Coal quality log Coal lithology log
QBD 8105	Seam thickness log Coal lithology log Neutron - Neutron Coal quality log
QBD 8106	Coal lithology log Gamma Ray and Neutron - Neutron log Gamma Ray and Neutron - Neutron log Coal lithology log Seam thickness log Coal quality log

(see coal file report 615 for copies of logs.)

QBR 8101	Coal lithology log Neutron - Neutron log
QBR 8102	Gamma Ray and Neutron - Neutron Coal lithology log
QBR 8103	Sonic log Coal quality log Detail Micro-resistivity pad trace Seam thickness log Gamma ray and Neutron - Neutron Neutron - Neutron General log Micro-resistivity pad trace Coal lithology log
QBR 8104	Coal lithology log Gamma ray and Neutron - Neutron log Neutron - Neutron Sonic logs Seam thickness log Coal quality log Detail Micro-resistivity pad trace
QBR 8105	Gamma ray and Neutron - Neutron Seam thickness log Sonic log Coal lithology log Detail Micro-resistivity log Neutron - Neutron Coal quality log
QBR 8112	Coal lithology log Gamma ray and Neutron - Neutron log Seam thickness log Coal quality log
QBR 8115	Coal lithology log Gamma ray and Neutron - Neutron log Seam thickness log Coal quality log
QBR 8116	Seam thickness log Coal lithology log Coal quality log Gamma ray and Neutron - Neutron
QBR 8117	Coal lithology log Coal quality log Seam thickness log Gamma ray and Neutron - Neutron

QBR 8118	Seam thickness log Coal quality log Gamma ray and Neutron - Neutron log Coal lithology log
QBR 8119	Coal quality log Coal lithology log Seam thickness log Gamma ray and Neutron - Neutron log
QBR 8121	Seam thickness log Coal quality log Gamma ray and Neutron - Neutron Coal lithology log
QBR 8122	Coal quality log Coal lithology log Gamma ray and Neutron - Neutron Seam thickness log

QMR 8101	Neutron - Neutron Coal quality log Seam thickness log Coal lithology log Coal lithology log
QMR 8102	Gamma ray and Neutron - Neutron Neutron - Neutron Neutron - Neutron Sonic Seam thickness log Coal lithology log Coal lithology log Coal quality log
QFR 8103	Sonic Seam thickness log Coal lithology log Coal quality log Neutron - Neutron Neutron - Neutron, Gamma log Coal lithology log
QMR 8104	Coal quality log Coal lithology log
QMR 8105	Coal quality log Gamma ray and Neutron - Neutron log Seam thickness log Sonic Neutron - Neutron Coal lithology log
QMR 8106	Sonic Gamma Ray and Neutron - Neutron log Neutron - Neutron Coal quality log Coal lithology log Seam thickness log
QMR 8107	Sonic Coal quality log Seam thickness log Coal lithology log Neutron - Neutron Gamma ray and Neutron - Neutron log
QMR 8108	Neutron - Neutron log Seam thickness log Coal quality log Gamma ray and Neutron - Neutron logs Coal lithology log Sonic logs

QMR 8109	<ul style="list-style-type: none"> Coal lithology log Neutron - Neutron log Sonic log Gamma ray and Neutron - Neutron log Coal quality log Seam thickness log
QMR 8110	<ul style="list-style-type: none"> Coal quality log Sonic Coal lithology log Seam thickness log Gamma ray Neutron - Neutron Neutron - Neutron
QMR 8111	<ul style="list-style-type: none"> Coal quality log Sonic Seam thickness log Gamma ray and Neutron - Neutron log Neutron - Neutron Coal lithology log
QMR 8112	<ul style="list-style-type: none"> High Resolution Sonic Coal lithology log Gamma ray and Neutron - Neutron log Neutron - Neutron Coal quality log Seam thickness log
QMR 8113	<ul style="list-style-type: none"> Gamma ray and Neutron - Neutron log Coal lithology log Coal quality log Seam thickness log Sonic Neutron - Neutron
QMR 8114	<ul style="list-style-type: none"> Sonic Gamma ray Neutron - Neutron Coal lithology log Seam thickness log Coal quality log Neutron - Neutron
QMR 8115	<ul style="list-style-type: none"> Sonic Coal lithology log Neutron - Neutron and Gamma Ray Neutron - Neutron Seam thickness log Coal quality log

QMR 8116	Gamma ray and Neutron - Neutronlog Seam thickness log Coal quality log Neutron - Neutron Coal lithology log
QMR 8117	Neutron - Neutron Coal lithology log Coal quality log Seam thickness log Gamma ray Neutron - Neutron
QMR 8118	Coal quality log Gamma ray and Neutron - Neutron log Neutron - Neutron Coal lithology log Seam thickness log
QMR 8119	Coal lithology log Seam thickness log Coal quality log Neutron - Neutron Coal quality log
QMR 8120	Neutron - Neutron Coal lithology log Seam thickness log Neutron - Neutron Coal quality log
QMR 8121	Coal quality log Seam thickness log Coal lithology log Gamma ray and Neutron - Neutron log
QMR 8122	Coal quality log Seam thickness log Gamma ray and Neutron - Neutron log Coal lithology log
QMR 8123	Seam thickness log Coal quality log Gamma ray and Neutron - Neutron log Coal lithology log