

MapPlace2Go

A user-friendly
map for everyone!

Tools



Layers

Legend

Base Map

- Communities
- Roads
- ++++ Railways
- Rivers
- Lakes
- Sea
- - - Border

Mining

- ⊠ Metals Mines
- ⊠ Industrial Minerals Mines
- ⊠ Coal Mines

Mine in Development

Exploration Projects

Tenure

First Nations

Administrative

Env. Assessment



BC Parks



Introductory Page with Help Presentation

MapPlace2Go Map



Details: This map is designed for simple use. Use the Tools to navigate, zoom and print the map. The Index map can also be used to navigate using the draw box method (left-click mouse, drag, release). Themes include Mining, Exploration Projects, Tenure, First Nations and Environmental Assessment Projects. Some layers have a Zoom Goto  feature, which is activated by left-clicking the  and selecting from a list; the object appears if the layer is turned on. A Legend tab displays a view-dependent legend. Right-click the map for additional functionality.

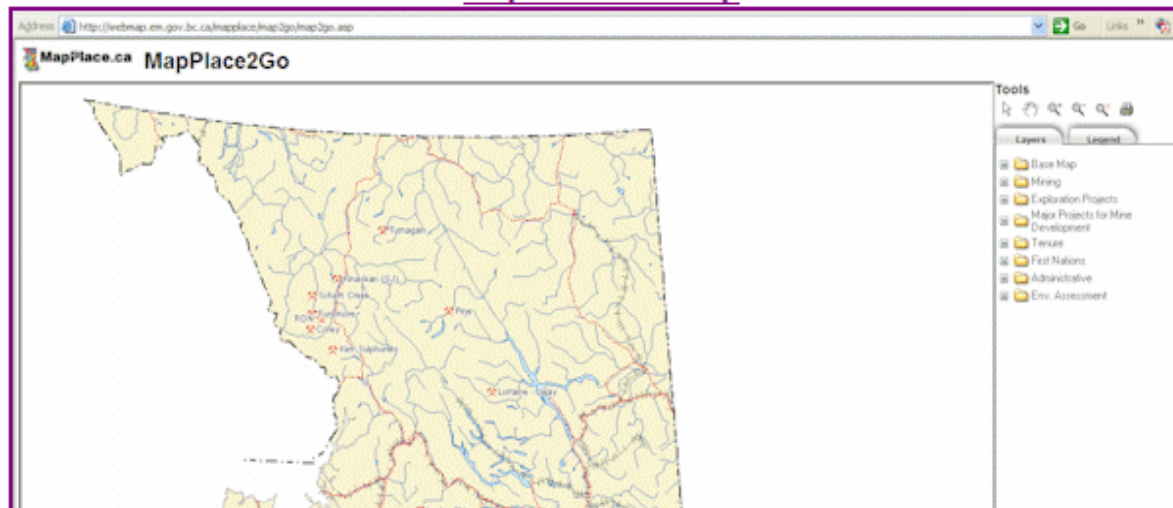
- **MapPlace2Go Features:** [PowerPoint \(7MB\)](#) or [PDF \(2.5MB\)](#) formats
- [MapPlace2Go Glossary](#)

The Mines, Major Projects and Exploration Projects layers are linked to a 'Project Record Summary' report, which includes project status, example: 'Operating' or 'Significant Exploration', company contact information including their website if available. From this report there are links to MINFILE, Notices of Work, Environmental Assessment Projects, and KML for Google Earth display. To view the Project Record Summary report, double-click the left mouse button on the mine or project symbol.

Reports are also associated with the tenure layer, First Nation's Aboriginal Communities layer, Federal Electoral Boundaries layer, and Environmental Assessment for Mining and Energy projects. To activate the reports, double-click the left mouse button on the desired object on the map. Tenure can be viewed at 1:1 million scale and is linked to the Mineral Titles Online viewer report. The Federal Electoral Boundaries layers link to the Voter Information Service site for the selected district. The Environment Assessment layer links the Environmental Assessment Office (EAO) Project Information Centre (e-PIC) site.

Note 1: Printing a map with layers that have shading, such as SOI or Mineral Titles, may be slow. Using the [Rasterize print job](#) selection in the Print dialog may help.

MapPlace2Go Map



MapPlace2Go Features

Layers Provided

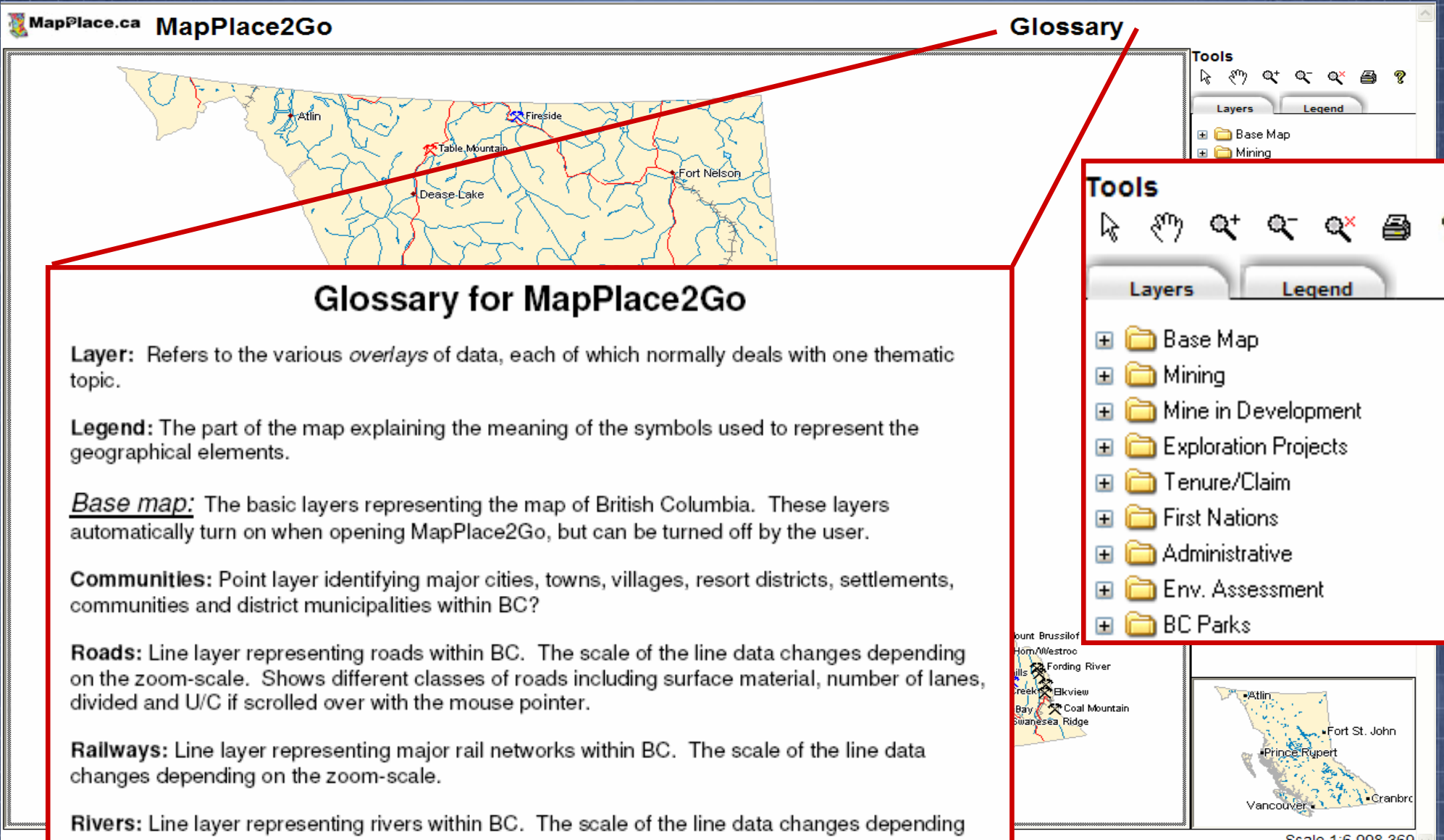
- Basemap layers
- Mining related layers
- Mineral claims including coal licenses
- First Nations
- Administrative boundaries
- Environment assessment
- BC Parks

Reports and Links

- Mines, Major Projects, Exploration Projects
- Tenure
- First Nations
- Environmental Assessment

Search tool (Zoom Goto) for some Layers

Map opens up with basemap and mines layers displayed



The screenshot shows the MapPlace2Go web application. At the top left is the logo 'MapPlace.ca MapPlace2Go'. The main area displays a map of British Columbia with several locations marked: Atlin, Fireside, Table Mountain, Dease Lake, and Fort Nelson. A red line highlights the 'Glossary' section. On the right, there are two panels: 'Tools' and 'Layers'. The 'Layers' panel shows 'Base Map' and 'Mining' selected. Below it is a larger 'Tools' panel with a list of layers: Base Map, Mining, Mine in Development, Exploration Projects, Tenure/Claim, First Nations, Administrative, Env. Assessment, and BC Parks. At the bottom right, there is a smaller map showing a different region of BC with locations like Atlin, Fort St. John, Prince Rupert, Vancouver, and Cranbrook. A scale of 1:6,000,000 is indicated.

Glossary for MapPlace2Go

Layer: Refers to the various *overlays* of data, each of which normally deals with one thematic topic.

Legend: The part of the map explaining the meaning of the symbols used to represent the geographical elements.

Base map: The basic layers representing the map of British Columbia. These layers automatically turn on when opening MapPlace2Go, but can be turned off by the user.

Communities: Point layer identifying major cities, towns, villages, resort districts, settlements, communities and district municipalities within BC?

Roads: Line layer representing roads within BC. The scale of the line data changes depending on the zoom-scale. Shows different classes of roads including surface material, number of lanes, divided and U/C if scrolled over with the mouse pointer.

Railways: Line layer representing major rail networks within BC. The scale of the line data changes depending on the zoom-scale.

Rivers: Line layer representing rivers within BC. The scale of the line data changes depending on the zoom-scale.

Lakes: Polygon layer representing major lakes within BC. The scale of the polygon data changes depending on the zoom-scale.

Sea: Polygon layer that represents the Pacific Ocean.

Border: Line layer representing Provincial and National Borders surrounding BC.

Zoomed into Area of Interest

MapPlace.ca MapPlace2Go



Tools



Layers

Legend

- Base Map
- Mining
- Mine in Development
- Exploration Projects
- Tenure
- First Nations
- Administrative
- Env. Assessment
- BC Parks

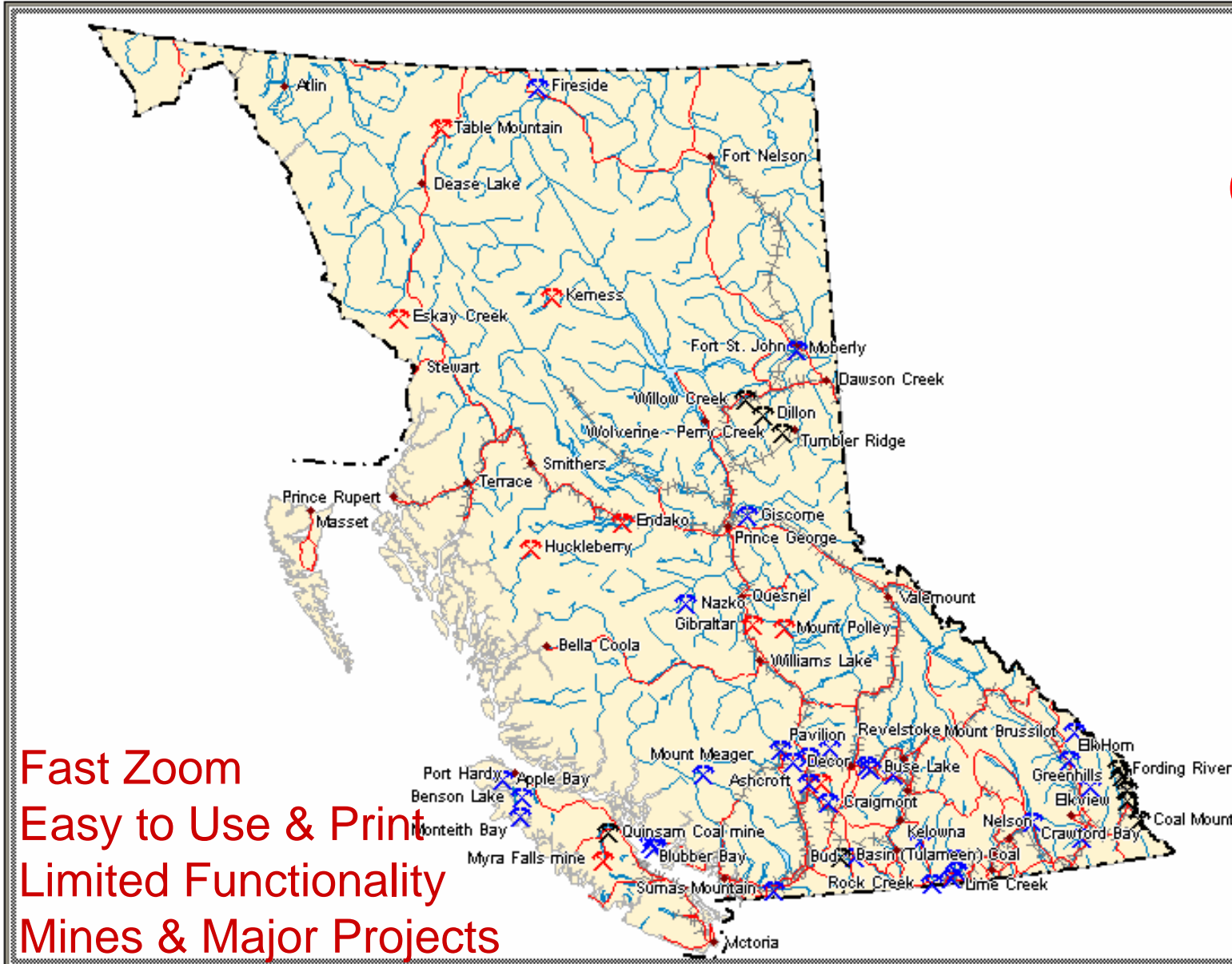
Area highlighted in location map



Scale 1:1,675,706

Mines Layers

MapPlace.ca MapPlace2Go



Tools

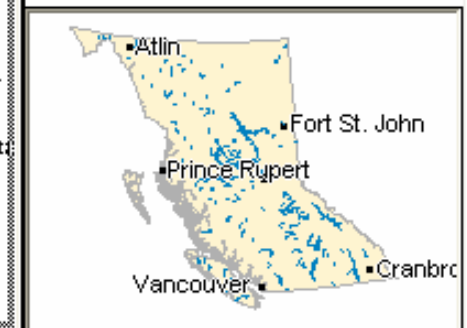
Layers Legend

- Base Map
- Mining
- Metals Mines
- Industrial Minerals
- Coal Mines
- Closed Mines
- Mine in Development
- Exploration Projects
- Tenure
- First Nations
- Administrative
- Env. Assessment
- BC Parks

Search Tool

Mines Layers

Fast Zoom
Easy to Use & Print
Limited Functionality
Mines & Major Projects

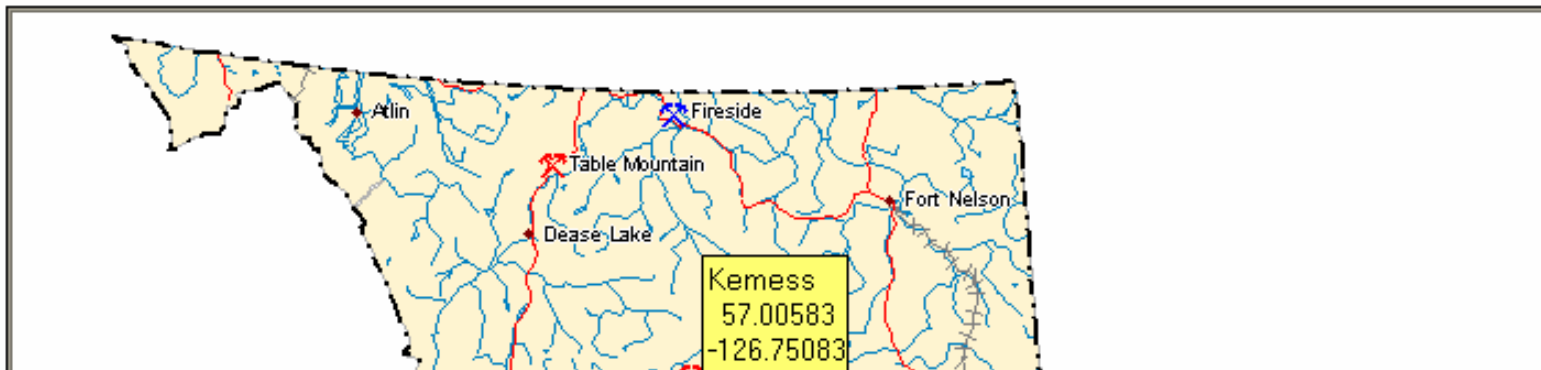


Scale 1:9,797,717

Mine Layers Linked to Report

Major projects and exploration project report links to MINFILE, Company Website, MMS and Environmental Assessment

MapPlace.ca MapPlace2Go



Tools

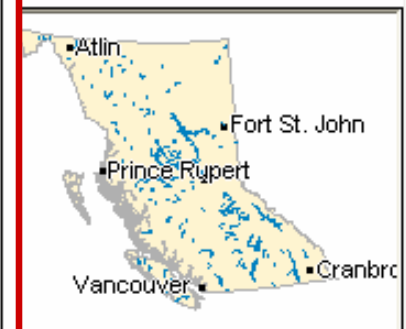
Layers Legend

- Base Map
- Mining
 - Metals Mines
 - Industrial Minerals Mines
 - Coal Mines
 - Closed Mines
 - Mine in Development
 - Exploration Projects
 - Tenure
 - First Nations
 - Administrative
 - Env. Assessment
 - BC Parks

Project Record Summary

Kemess

Operator	Northgate Minerals Corporation
Sector	Metal
Status	Operating Mine
Latitude	57.006
Longitude	-126.751
MINFILE	094E 094 094E 021
MMS	1300244
EAO	22
Address	PO Box 3519 Smithers V0J 2N0
Phone	250-881-8400
Fax	250-881-8418
Web	http://www.northgateexploration.ca/frame_kemess_mine.html





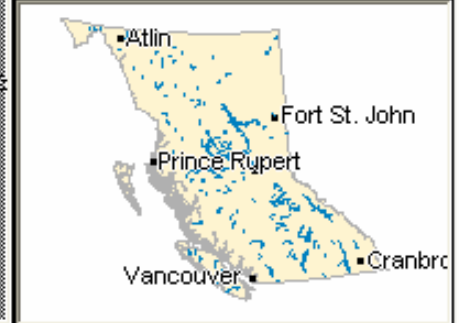
Tools

Navigation icons: mouse cursor, hand, zoom in (+), zoom out (-), zoom reset (X), print, help (?).

Layers | **Legend**

- Base Map
- Mining
- Mine in Development
- Exploration Projects
- Metal
- Industrial Minerals
- Coal
- Tenure
- First Nations
- Administrative
- Env. Assessment
- BC Parks

Major Project Layers



MapPlace2Go Zoom to Project

MapPlace.ca MapPlace2Go

Zoom Goto

Location:

- Granduc
- Hushamu
- Kerr-Sulphurets
- Kinaskan (GJ)
- Lorraine - Jajay
- Lucky Ship**
- Lustdust
- Morrison
- Mount Milligan
- New Dalmeny

OK

Cancel

Help

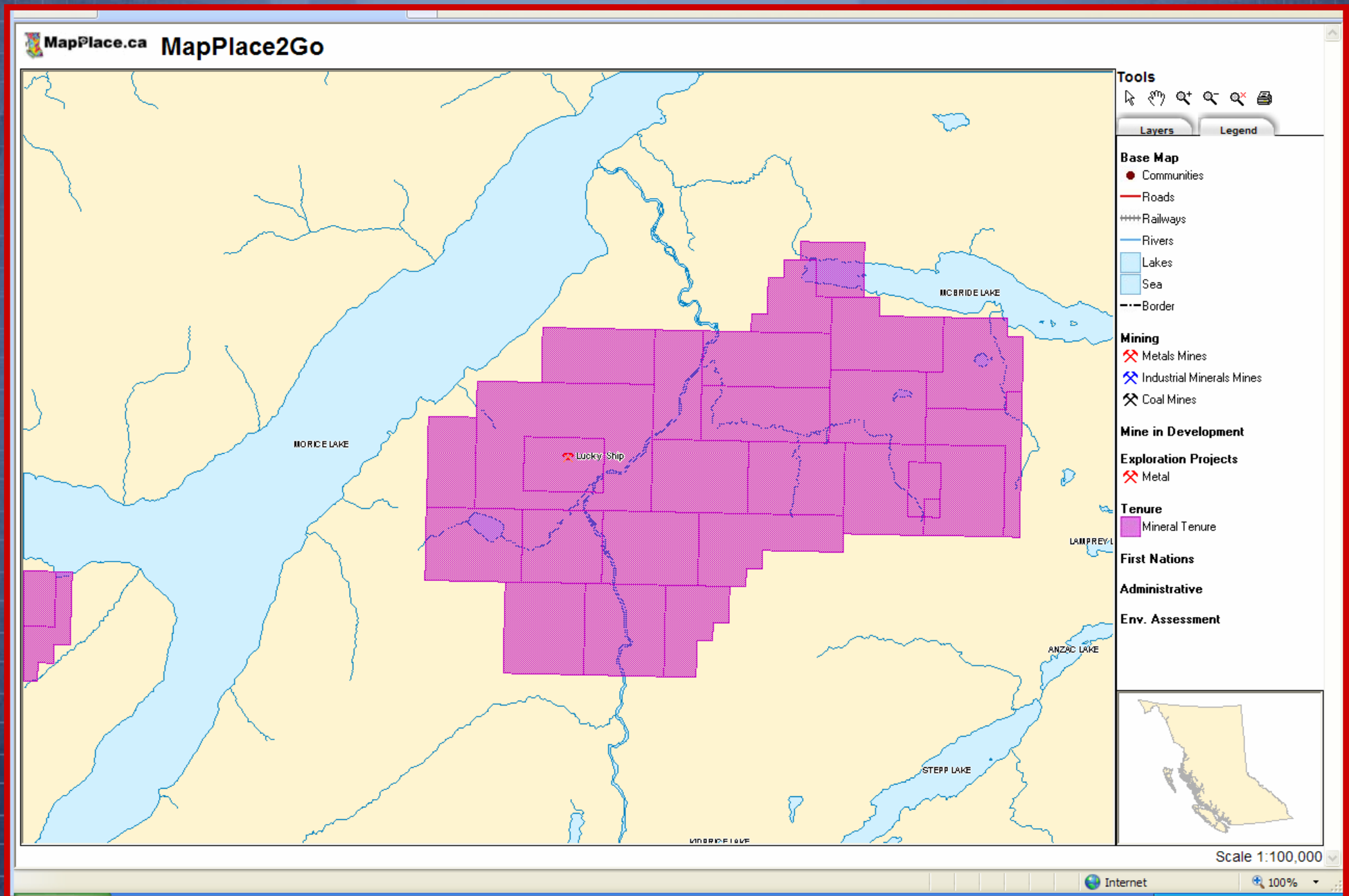
Layers

- Base Map
- Mining
- Mine in Development
- Exploration Projects
 - Metal
 - Industrial Minerals
 - Coal
- Tenure
 - Mineral Tenure
 - Placer Tenure
- First Nations
- Administrative
- Env. Assessment

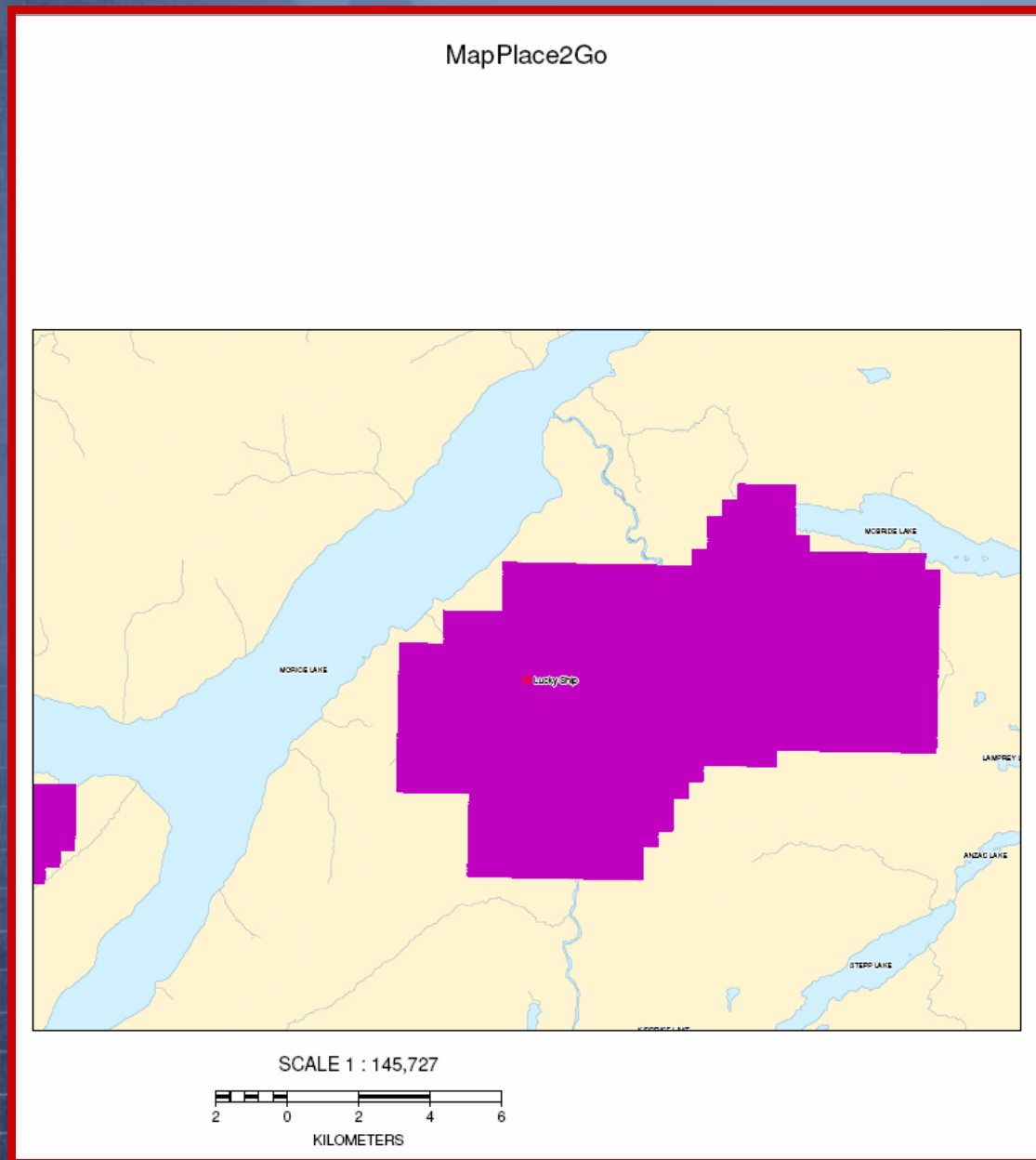
Zoom Goto Search Tool

Scale 1:1,000,000

Zoomed Project Map with Legend



MapPlace2Go Prints Separate Map & Legend



Tools

Map navigation icons: pan, zoom in, zoom out, home, print.

Layers | **Legend**

Base Map

- Communities
- Roads
- ++++ Railways
- Rivers
- Lakes
- Sea
- - - Border

Mining

- ⊠ Metals Mines
- ⊠ Industrial Minerals Mines
- ⊠ Coal Mines

Mine in Development

- ⊠ Major Projects - Metals

Exploration Projects

- ⊠ Metal

Tenure

- Mineral Tenure

First Nations

Administrative

Env. Assessment

Tenure with Report

MapPlace.ca MapPlace2Go

Tools

Layers Legend

Base Map

- Communities
- Railways
- Rivers
- Lakes
- Sea
- Border

Mining

- Mine in Development
- Exploration Projects

BRITISH COLUMBIA

Mineral Titles Online Viewer

Public Access

Tenure Detail

Tenure Number ID	510116 View Tenure
Tenure Type	Mineral (M)
Tenure Sub Type	Claim (C)
Title Type	Mineral Cell Title Submission (MCX)
Mining Division	
Good To Date	2016/jun/04
Issue Date	2005/apr/03
Termination Type	
Termination Comments	
Termination Date	
Tag Number	
Claim Name	
Old Tenure Code	
Area In Hectares	284.969

Map Numbers:

[093L](#)

Owners:

146547	MACINTYRE, DONALD GEORGE	50.0%
146623	PARSONS, VICTOR HAROLD	50.0%

Done

Scale 1:100,000

100%

Links to MTO Viewer, tenure within mapsheet, and owner information

Aboriginal Communities with Report

MapPlace.ca MapPlace2Go

The main map shows a portion of British Columbia with several locations marked: Atlin, Table Mountain, Dease Lake, Fort Nelson, Eskay Creek, Keress, and Fort St. John. A detailed inset map shows the entire province with numerous red squares indicating reserve locations. A 'Reserve Detail' window is open, providing information for 'STONY CREEK NO. 1'.

Tools

Layers Legend

- Base Map
- Mining
- Mine in Development
- Exploration Projects
- Tenure
- First Nations
 - Aboriginal Communities
 - Indian Reserves
 - Statement of Intent (SOI)
- Administrative
- Env. Assessment
- BC Parks

Reserve Detail

Official Name **STONY CREEK NO. 1**
Number **07528**
Location **On/sur Stony Creek**
Hectares **2578**

List of First Nations on this Reserve

[615 Saik'uz First Nation](#) RR 1 SITE 12 COMP 26, VANDERHOOF, BC, V0J 3A0

Scale 1:6,907,834

Internet 100%

MapPlace2Go Zoom Goto SOI

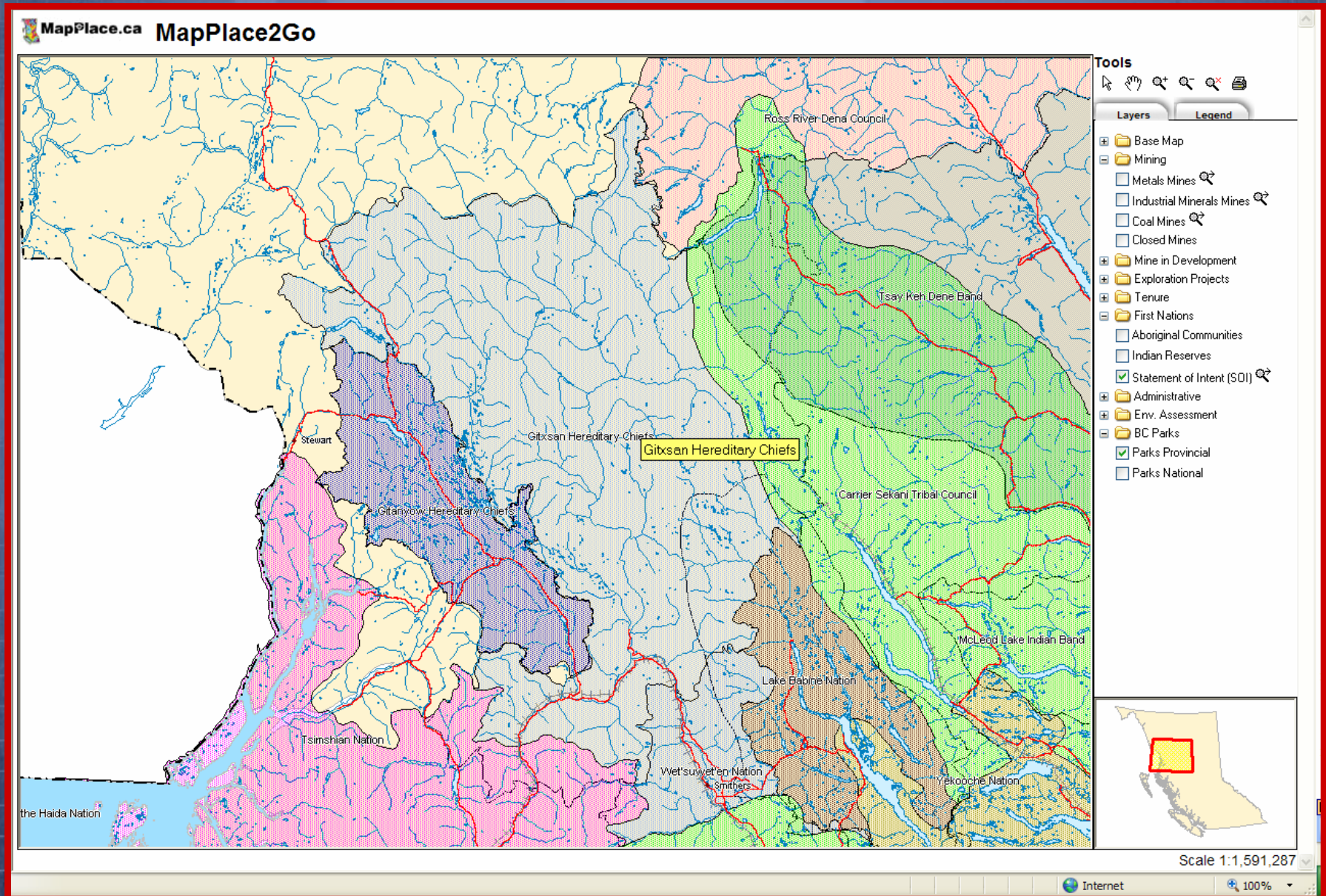
The screenshot shows the MapPlace2Go web application in a Windows Internet Explorer browser. The address bar displays the URL: <http://webmap.em.gov.bc.ca/mapplace/map2go/map2go.asp>. The browser's menu bar includes File, Edit, View, Favorites, Tools, and Help. The toolbar contains navigation and utility icons.

The main content area features a map of British Columbia with a 'Zoom Goto' dialog box overlaid. The dialog box has a blue title bar and a close button. It contains a 'Location:' label and a list box with the following entries:

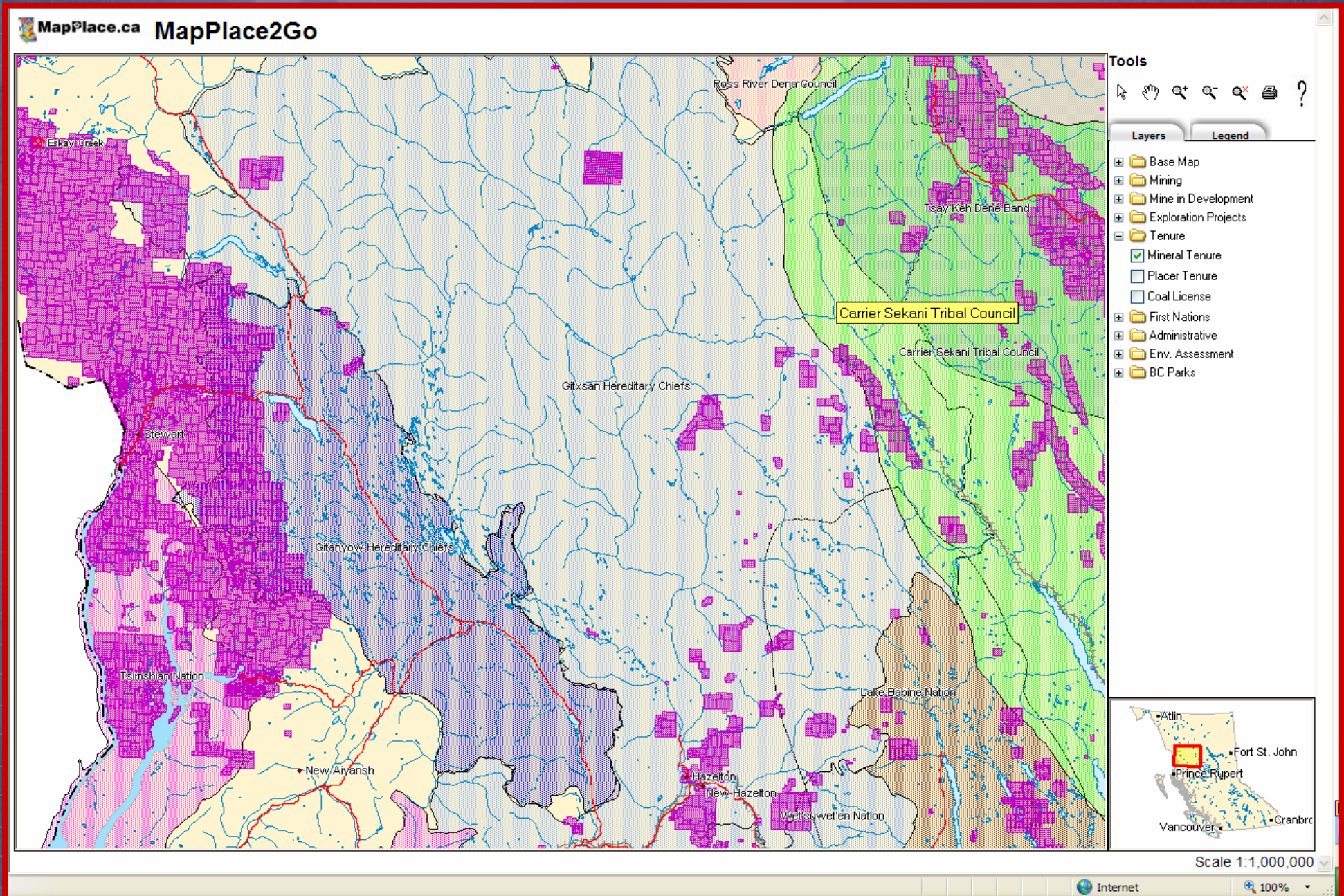
- D'a'naxda'xw Awaetlatla Nation
- Ditidaht First Nation
- Esketemc First Nation
- Gitanyow Hereditary Chiefs
- Gitksan Hereditary Chiefs**
- Gwa'Sala-Nakwaxda'xw Nation
- Haisla Nation
- Hamatla Treaty Society
- Heiltsuk Nation
- Wanooche Indian Band

Buttons for 'OK', 'Cancel', and 'Help' are located to the right of the list box. In the background, the map shows various geographical features and labels, including Table Mountain, Dease Lake, Fort Nelson, and numerous other locations. A legend on the right side of the map lists various layers, including 'Statement of Intent (SOI)', which is highlighted with a red arrow. The scale at the bottom right is 1:6,907,834.

Results of 'Zoom Goto' of Gitxsan Hereditary Chiefs SOI

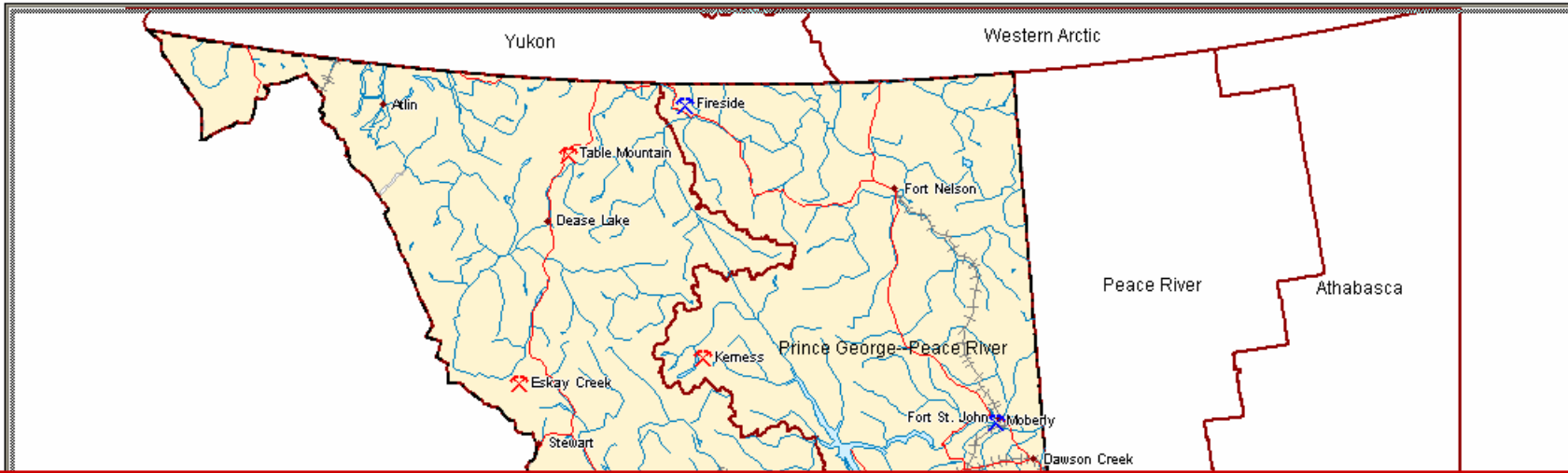


SOI-Gitxsan Hereditary Chiefs with Mine layers and Tenure



Federal Electoral Boundaries layer with link to website

MapPlace.ca MapPlace2Go



Tools

- Layers Legend
- Base Map
 - Mining
 - Mine in Development
 - Exploration Projects
 - Tenure
 - First Nations
 - Administrative
 - Provincial Electoral Boundaries
 - Federal Electoral Boundaries
 - Mining Regions
 - Regional Districts
 - Env. Assessment
 - BC Parks

Elections Canada

Voter Information Service

Français Home Start New Search FAQ Map Candidates Returning Officer Profile Past Results



Frequently asked questions

Elector information

- Am I on the list of electors?
- Who is entitled to vote?
- I recently moved. Am I still registered to vote?

Past elections

- Election results since 2004
- Historical results (1997-2004)

General information

- Canada's federal electoral districts name changes
- Current standing of parties in the House of Commons - 39th Parliament
- Vacant seats in the House of Commons since the 2006 general election

Your electoral district

The electoral district of Skeena--Bulkley Valley (British Columbia) has a population of 99,474 with 60,810 registered voters and 207 polling divisions.

[Click here](#) for more information on your district.
[Click here](#) for a map of your district.

Your Member of Parliament

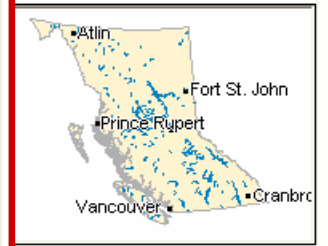
Nathan Cullen

[Click here](#) for more information on your Member of Parliament.

Last election

The last election in your electoral district was a general election held on Monday, January 23, 2006.

[Click here](#) to see the list of candidates for the last election.



Scale 1:6,925,753

Programs & Services

Ministry of
Energy, Mines and
Petroleum Resources

- Ministry News
- Ministry Search
- Reports & Publications
- Site Map
- Contacts

MapPlace Home Page

Telkwa Coalbed Gas

Contents

- [Main Maps](#)
- [Thematic Maps](#)
- [Summary Data Available](#)
- [MapPlace Metadata](#)
- [Geospatial Downloads](#)
- [Online Help & Documents](#)
- [Updates on MapPlace](#)
- [Other Data & Map Links](#)

Other Links

- [Aggregate](#)
- [ARIS Assessment Reports](#)
- [BCGS Links](#)
- [Bedrock Mapping](#)
- [Coal](#)
- [Educational Resources](#)
- [Exploration & Mines](#)
- [Geochemistry](#)
- [Geology of BC](#)
- [Geophysical Data](#)
- [Geoscience Agencies](#)
- [Hiring](#)
- [Industrial Minerals](#)
- [MapPlace](#)
- [MINFILE Mineral Inventory](#)
- [Mineral Properties Available](#)
- [Metallic Minerals](#)
- [Mineral Deposit Profiles](#)
- [Mineral Potential](#)
- [Partnerships](#)
- [Property File](#)
- [Publications Catalogue](#)
- [Staff: Who Are We?](#)
- [Surficial Geology & Hazards](#)
- [Terrain & Soil Maps](#)
- [What's New](#)



- [Main Maps](#)
- [Thematic Maps](#)
- [Complete Table of Maps](#)
- [First Time Users ... with FAQs and MapPlace.ca Abstract](#)

MapPlace facilitates easy access to the maps and databases of the BC Ministry of Energy, Mines and Petroleum Resources. Create your own maps using interactive data sets. Create reports and download data from selected tables. For more information, visit our [Main Maps](#) to assist in your mineral exploration projects. Or visit [Thematic Maps](#), [Publication Index](#), [Aggregate Potential](#), [Terrain & Soils](#), [Geophysical](#), and [Mining Economy](#) pages to [Coal](#).

NEW!

- Added [Bonaparte Lake Geophysical Survey Map and Data](#).
- Added [Atlin Geophysics Map](#).
- Added [Jennings River Geophysical Survey Map and Data](#).
- Updated the [Image Analysis Toolbox](#) with 100 new ASTER images.
- Added [Geoscience BC 2007 Workshop Notes](#).
- Added [MapPlace2go Map](#) and [MapBuilder](#).
- [ARIS MapBuilder](#) creates claim maps for use in Assessment Reports.
- [See Updates on MapPlace](#).

Links to other Data Sources, Maps and Information

For questions or more information on geology and minerals in British Columbia please contact [B.C. Geological Survey & Regional Geology Staff](#) or use the [toll free number](#) (B.C. residents only). [Comment & Support on MapPlace](#).

This page last updated: April 02, 2007.

[BC Geological Survey Home Page](#)



[BC Geological Survey Home](#)

MapPlace2Go



Access to
MapPlace2go