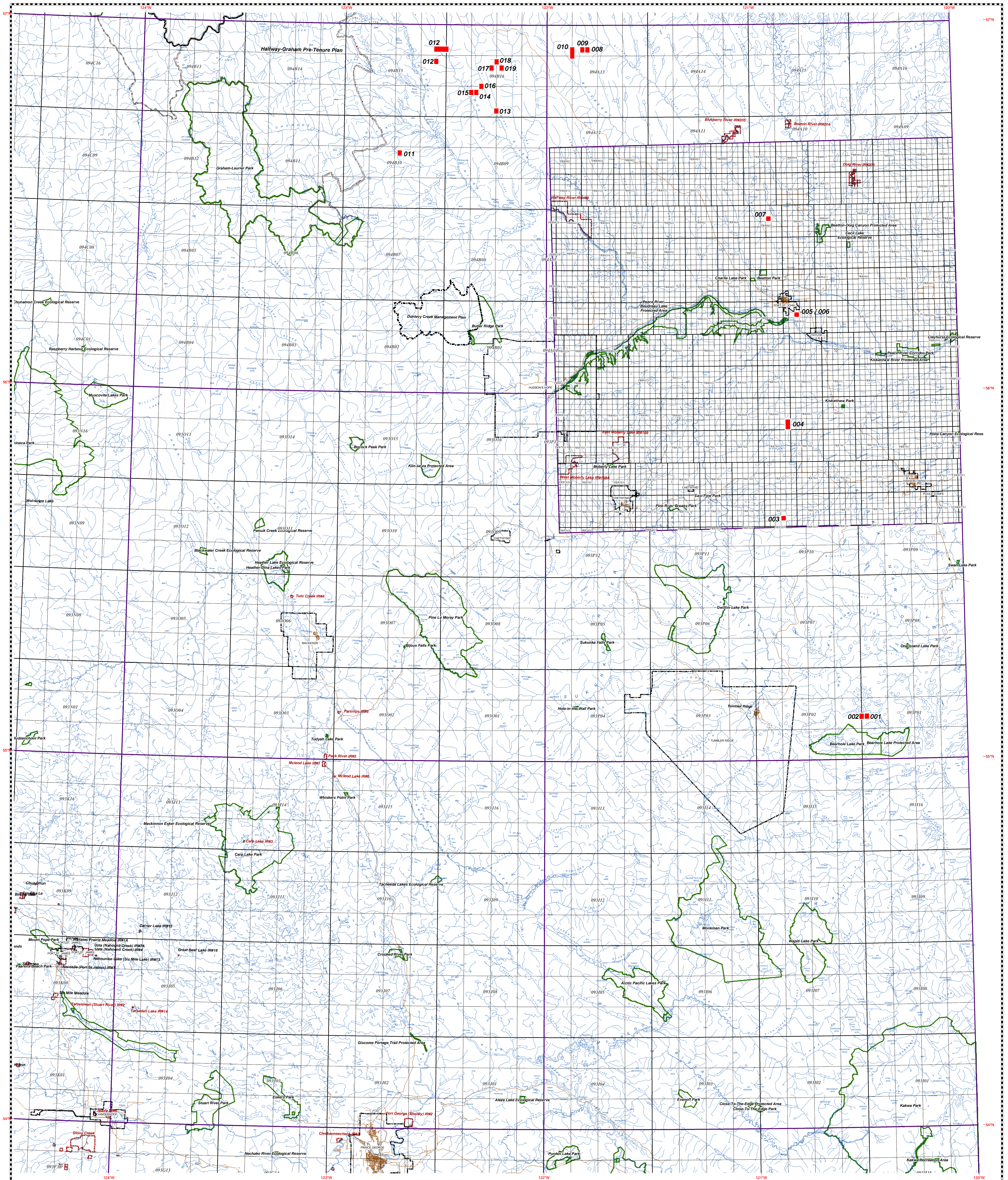


POSTING REQUEST MAP (south) March 21st, 2007 DISPOSITION



Legend

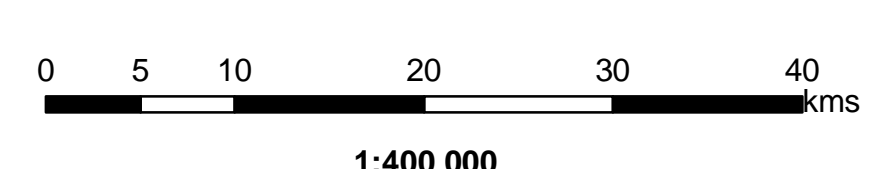
- March Parcels
- Park/Protected Area/Ecological Reserve
- Indian Reserve
- Muskwa-Kechika Management Plan
- Upper Skeena Management Plan
- Dunlavy Creek Management Plan
- Besa Prophet Pre-Tenure Plan
- Halfway-Graham Pre-Tenure Plan
- Municipality



Parcels being considered for inclusion in the
March 21st, 2007
 disposition of Crown P & NG rights

Ministry of Energy, Mines and Petroleum Resources
 Titles and Offshore Division
 POSTING REQUEST MAP (south)
 March 21st, 2007 DISPOSITION

The Prefix for all Parcels is 0703-



1:400 000

Projection: Universal Transverse Mercator Zone 10 NAD83